



732.20966  
[.95a  
c.2

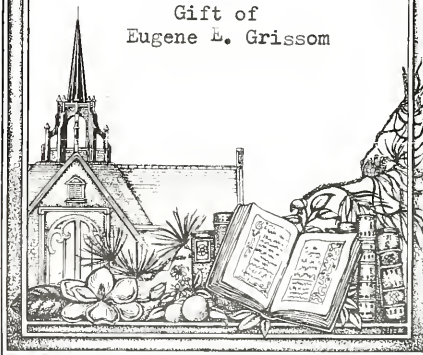
# AFRICAN ART

Illinois State University

EX LIBRIS  
UNIVERSITY of FLORIDA



Gift of  
Eugene B. Grissom



# AFRICAN ART

Permanent Collection  
Illinois State University  
Normal-Bloomington

The Ewing Museum of Nations  
Illinois State University Foundation



Ewing Museum of Nations

732,20966

0558

02

ARCH &  
FINE ARTS  
LIBRARY



F. Louis Hoover  
Editor

Photography:

Illinois State University  
Photographic Services

# Preface

After nearly 30 years of service, it is appropriate that F. Louis Hoover's last official contribution to Illinois State University was the development of a fine collection of traditional African art.

Over the years, Dr. Hoover developed his avocation of collecting art while pursuing his vocation as an art educator. One of his major teaching and collecting interests has been the so-called "primitive" arts, but he had confined his private acquisitions primarily to the Americas.

The opportunity to combine his avocation and vocation came when he was asked to direct the University Museums and Galleries shortly after he had retired as chairman of the Art Department. Immediately Mr. and Mrs. Hoover donated portions of their personal collections to the University, and he began gathering support for African acquisitions. Cooperation of the University, the University Foundation, officials of governments and national museum directors made this project possible; but one man engendered our cooperation, and he has made us proud. His success is proved by this catalog.

We also take pride in the fact that a man of Dr. Frank Willett's reputation in the field of African anthropology and art history was interested in preparing the Introduction to this catalog. His book, *African Art*, and his writings in the *Encyclopedia Britannica* have served internationally to introduce millions to Africa and its art. We hope that this catalog will introduce our collection and its contribution to the study of African art, and we thank Professor Willett for his part in its publication.

It is not often that a museum embarks on a totally new area of acquisition; but when it is done, it is done with the full intent to maintain a vital collection. The University Museums will actively seek to improve our collection of African art and provide for public accessibility.

Arne Hansen  
Director of Museums

# Introduction

This book draws attention for the first time to an important collection of African sculpture, the great bulk of which was purchased in Africa by Dr. F. Louis Hoover during two visits in the Springs of 1972 and 1973. That he was able to obtain so much, of such a high standard in such a short time speaks as highly of his industry as it does of his judgement. The Administration of Illinois State University is to be congratulated on its decision to invite Dr. Hoover to make these trips, for it would probably be impossible to assemble such a collection today in this way. Any university which wished to build up a comparable collection nowadays would find the cost prohibitive. Moreover, these pieces were all collected and exported with the agreement of the appropriate local authority, thus demonstrating that good pieces can be obtained legitimately without recourse to smuggling.


It is an especial joy to me that this material was collected, not for Dr. Hoover's personal gain or even professional advancement (for he was about to retire when he made these trips), but purely so that it should be available not only to the University but also to the entire community for study and enjoyment.

Very few collections are evenly balanced: it would be very dull if all collections were similar. Since this material was mainly collected in West Africa the sculpture of the Congo Basin is barely represented, nor are there many Yoruba pieces. Nevertheless, the number of pieces from Upper Volta (with attributions made by Dr. Triande, Director of the National Museum in Ouagadougou) form probably the best collection anywhere in America.

Similarly the helmet masks for the Sande (women's initiation) society in Liberia and Sierra Leone are a very important group which demonstrates well the great amount of freedom of expression permitted to the artist even when he was required to adhere to a closely restricted formula. Again there are a large number of masks of the Dan-Ngere complex of Liberia and Ivory Coast, an interesting group of peoples who have been studied in the field by several scholars who have failed to reach agreement on their functions and meanings. There are also some good pieces of Dogon sculpture, varied and not repetitive examples of the work of the one group of people who have been studied more intensively than any other in Africa.

This collection then forms a remarkably good educational facility. African art is commonly taught from photographs and slides but these are inadequate substitutes for the original sculptures. Illinois State University now has one of the best collections of African sculpture in the State of Illinois. It is one which is especially suited for teaching, for its major clusters of objects will encourage investigation by graduate students in seminars, whilst the overall cover gives excellent support to general teaching of African art. It is to be hoped that the University community will make increasing use of this excellent and unusual facility, which will certainly attract scholars from elsewhere to visit the Ewing Museum of Nations.

Frank Willett  
Northwestern University  
September 1974



Digitized by the Internet Archive  
in 2011 with funding from  
LYRASIS Members and Sloan Foundation

<http://www.archive.org/details/africanartperman00ewin>

# Contents

## WESTERN SUDAN

Bambara	1-24
Bobo	25-37
Bobo-Fing	38-41
Bwa	42-46
Dogon	47-75
Gurunsi	76-84
Kurumba	85
Lobi	86-92
Mossi	93-142
Sambo	143-144
Sarakole	145
Senufo	146-177
Upper Volta region	178-180
Western Sudan region	181

## WESTERN GUINEA COAST

Agni	182
Ashanti	183-196
Baga	197-199
Bassa	200
Baule	201-235
Dan-Ngere	236-251
Dan-Mano	252-256
Dionla	257
Fulani	258-259
Garbi	260
Ghana region	261-264
Gio	265
Gola/De/Vai	266-270
Grebo	271-276
Guinea region	277
Guro	278-280
Ivory Coast region	281-299
Kissi	300
Kran	301-303

Kru	304-306
Liberia region	307-314
Logi	315
Loma	316
Mandingo	317
Mano	318
Mende	319-321
Ngere	322
Senegal region	323-341
Toma	342-343
Wolof	344-350

## NIGERIA, CAMEROON

Cameroon	351-355
Ekoi	356-357
Ibo	358-361
Itsekri	362-363
Kota	364
Nigeria region	365-366
Yoruba	367-386

## CONGO

Bena Lulua	387
Kuba	388-392
Ndengese	393
Pende	394-395
Salampasu	396
Songe	397
Suku	398
Teke	399
Tsaye	400
Tshokwe	401
Yaka	402-403

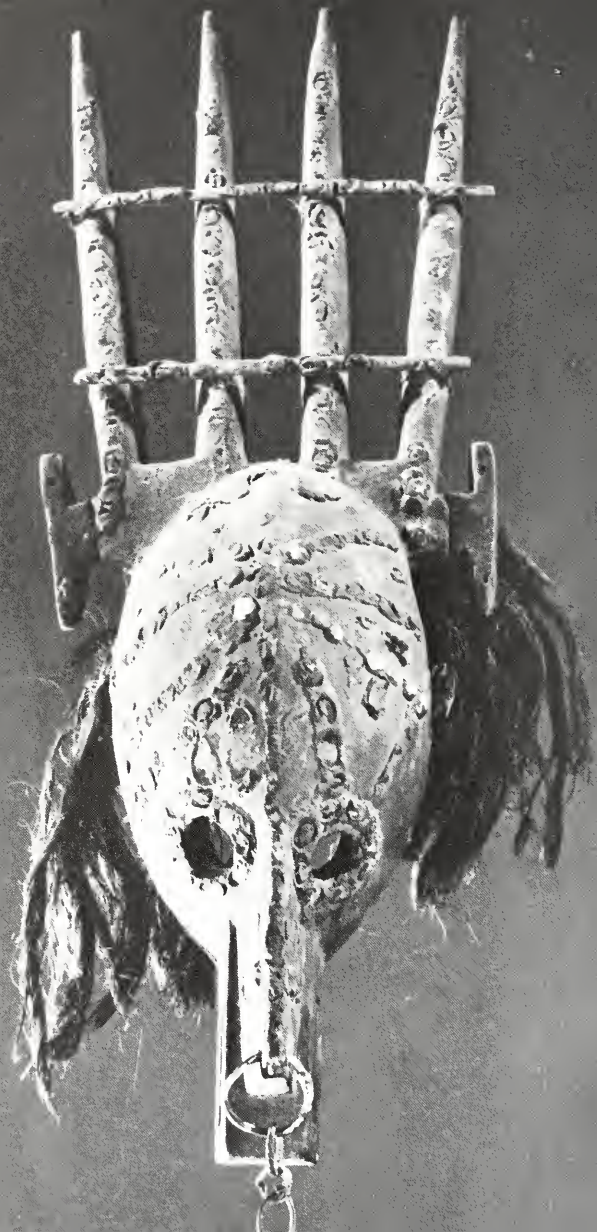
## WESTERN AFRICA

404-434









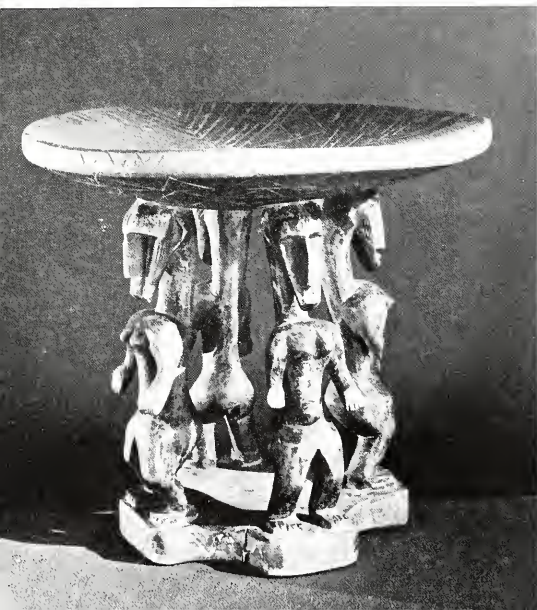
## THE WESTERN SUDAN

1. Fetish Figure  
BAMBARA people, Mali  
Wood with encrustation  
22" (55.9 cm.) long  
Acq. No. 7239
2. Mask  
BAMBARA people, Mali  
Wood with encrustation  
32" (81.3 cm.) high  
Acq. No. 7333
3. Mask  
BAMBARA people, Mali  
Wood with shells  
18 5/8" (47.3 cm.) high  
Acq. No. 7094
4. Mask  
BAMBARA people, Mali  
Wood with horns and fabric  
18 1/4" (46.3 cm.) high  
Acq. No. 7309
5. Mask  
BAMBARA people, Mali  
Wood with shells and encrustation  
27" (68.5 cm.) high  
Acq. No. 7334
6. Seated Female Figure  
BAMBARA people, Mali  
Wood, 30" (76.2 cm.) high  
Acq. No. 7191
7. Antelope Headpiece  
BAMBARA people, Mali  
Wood, 48 1/4" (122.5 cm.) high  
Acq. No. 7294
8. Antelope Headpiece  
BAMBARA people, Mali  
Wood, 65" (165 cm.) high  
Acq. No. 7295
9. Antelope Headpiece  
BAMBARA people, Mali  
Wood, 52 1/4" (132.7 cm.) high  
Acq. No. 7477



## THE WESTERN SUDAN

10. Antelope Headpiece  
BAMBARA people, Mali  
Wood with shells, fiber, and mirrors  
20" (50.8 cm.) high  
Acq. No. 7085
11. Antelope Headpiece  
BAMBARA people, Mali  
Wood, 27" (68.5 cm.) high  
Acq. No. 7331
12. Antelope Headpiece  
BAMBARA people, Mali  
Wood, 22 9/16" (57.3 cm.) high  
Acq. No. 7185
13. Antelope Headpiece  
BAMBARA people, Mali  
Wood with fiber, 42" (106.6 cm.) high  
Acq. No. 7093







## THE WESTERN SUDAN

14. Stool  
BAMBARA people, Mali  
Wood, 13 5/8" (34.6 cm.) high  
Acq. No. 7298
15. Geneological Figure  
BAMBARA people, Mali  
Wood with metal, 68" (172.7 cm.) high  
Acq. No. 7292
16. Geneological Figure  
BAMBARA people, Mali  
Wood with metal and pigment  
53" (134.6 cm.) high  
Acq. No. 7302
17. Standing Female Figure  
BAMBARA people, Mali  
Wood, 50 3/16" (127.4 cm.) high  
Acq. No. 7305
18. Seated Male Figure  
BAMBARA people, Mali  
Wood, 22 5/8" (57.5 cm.) high  
Acq. No. 7324
19. Mask  
BAMBARA people, Mali  
Wood, 24 7/8" (63.2 cm.) high  
Acq. No. 7303
20. Cow Mask  
BAMBARA people, Mali  
Wood with pigment  
23 11/16" (60.2 cm.) high  
Acq. No. 7332
21. Game Board  
BAMBARA people, Mali  
Wood, 33 3/4" (85.7 cm.) long  
Acq. No. 7321
22. Bracelet  
BAMBARA people, Mali  
Brass, 2 3/4" (7 cm.) diameter  
Acq. No. 7224



20

23. Bracelet  
BAMBARA people, Mali  
Brass, 2 7/8" (7.3 cm.) diameter  
Acq. No. 7223
24. Bracelet  
BAMBARA people, Mali  
Bronze, 3 3/16" (8.1 cm.) diameter  
Acq. No. 7222
25. Mask  
BOBO people, Upper Volta  
Wood, 18 3/4" (47.6 cm.) high  
Acq. No. 7116
26. Helmet Mask  
BOBO people, Upper Volta  
Wood with pigment  
57 7/8" (147 cm.) long  
Acq. No. 7463





## THE WESTERN SUDAN

27. Mask  
BOBO people, Upper Volta  
Wood, 36 5/8" (93 cm.) high  
Acq. No. 7281
28. Mask  
BOBO people, Upper Volta  
Wood, 32" (81.3 cm.) high  
Acq. No. 7238
29. Snake Mask  
BOBO people, Upper Volta  
Wood with pigment  
98 15/16" (251.1 cm.) long  
Acq. No. 7429
30. Crocodile Mask  
BOBO people, Upper Volta  
Wood with pigment  
84" (213.4 cm.) long  
Acq. No. 7430
31. Mask  
BOBO people, Upper Volta  
Wood, 32 3/4" (83.2 cm.) high) high  
Acq. No. 7296
32. Helmet Mask  
BOBO people, Upper Volta  
Wood with pigment  
66 5/16" (168.4 cm.) high  
Acq. No. 7457
33. Headpiece  
BOBO people, Upper Volta  
Wood with pigment  
22" (55.9 cm.) long  
Acq. No. 7225
34. Gourd Container  
BOBO people, Upper Volta  
Gourd, 13 1/4" (33.6 cm.) high  
Acq. No. 7089
35. Set of Eleven Baskets  
BOBO people, Upper Volta  
Woven grass with hide  
Acq. No. 7100





38

36. Bracelet  
BOBO people, Upper Volta  
Bronze, 3 7/8" (9.9. cm.) diameter  
Acq. No. 7316
37. Bracelet  
BOBO people, Upper Volta  
Bronze, 4 1/8" (10.5 cm.) diameter  
Acq. No. 7315
38. Mask  
BOBO-FING people, Upper Volta  
Wood, 39 1/4" (99.7 cm.) high  
Acq. No. 7385



39

39. Mask  
BOBO-FING people, Upper Volta  
Wood with pigment  
40 3/4" (103.5 cm.) high  
Acq. No. 7434
40. Flute  
BOBO-FING people, Upper Volta  
Wood, 17 15/16" (54.4 cm.) long  
Acq. No. 7392
41. Mask  
BOBO-FING people, Upper Volta  
Wood with pigment  
40 1/4" (102.2 cm.) high  
Acq. No. 7307



## THE WESTERN SUDAN

42. Mask  
BWA people, Upper Volta  
Wood, 32 1/2" (82.5 cm.) high  
Acq. No. 7359
43. Mask  
BWA people, Upper Volta  
Wood with pigment, 29 3/4" (75.5 cm.) high  
Acq. No. 7360
44. Mask  
BWA people, Upper Volta  
Wood with pigment  
27 3/8" (69.5 cm.) high  
Acq. No. 7336
45. Mask  
BWA people, Upper Volta  
Wood with pigment  
42 1/8" (107 cm.) high  
Acq. No. 7358
46. Mask  
BWA people, Upper Volta  
Wood with pigment  
20 1/4" (51.4 cm.) high  
Acq. No. 6955
47. Mask  
DOGON people, Mali  
Wood, 26 7/8" (68.3 cm.) high  
Acq. No. 7330
48. Mask  
DOGON people, Mali  
Wood, 29 1/2" (75 cm.) high  
Acq. No. 7323
49. Mask  
DOGON people, Mali  
Wood, 37" (97 cm.) high  
Acq. No. 7329
50. Mask  
DOGON people, Mali  
Wood, 18" (45.8 cm.) high  
Acq. No. 7233













42



43



33

51. Mask  
DOGON people, Mali  
Wood, 20 1/4" (51.5 cm.) high  
Acq. No. 7326

52. Mask  
DOGON people, Mali  
Wood, 14 1/8" (36 cm.) high  
Acq. No. 7325

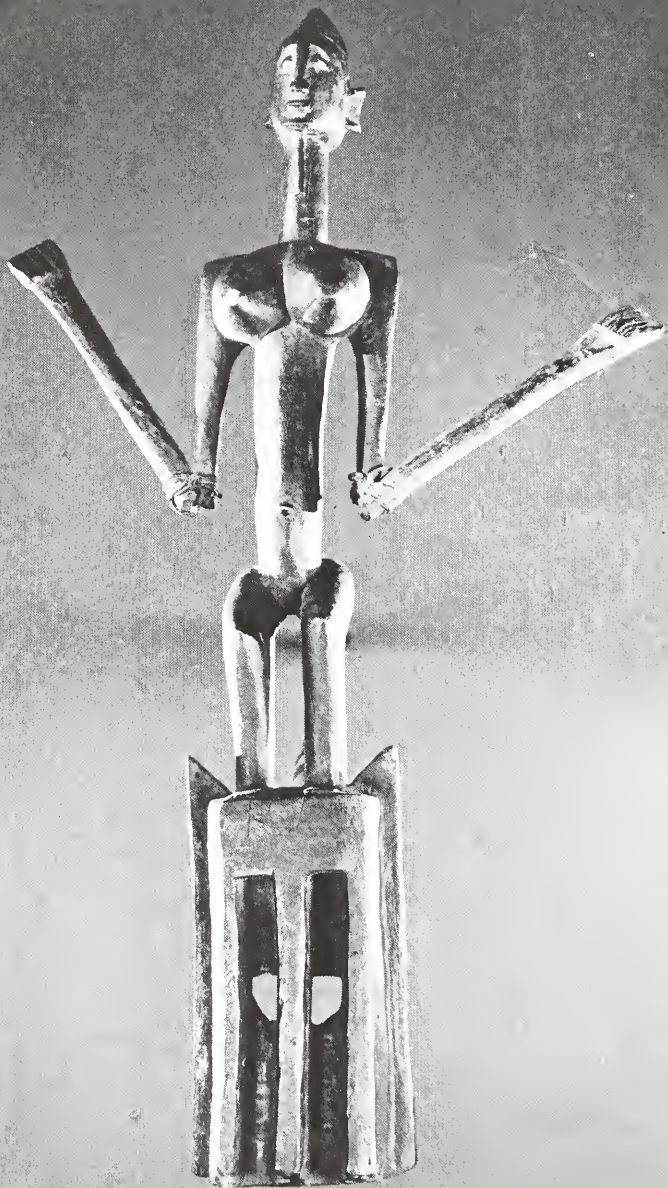
53. Granary Door  
DOGON people, Mali  
Wood, 28 1/2" (72.4 cm.) high  
Acq. No. 7310

47



48

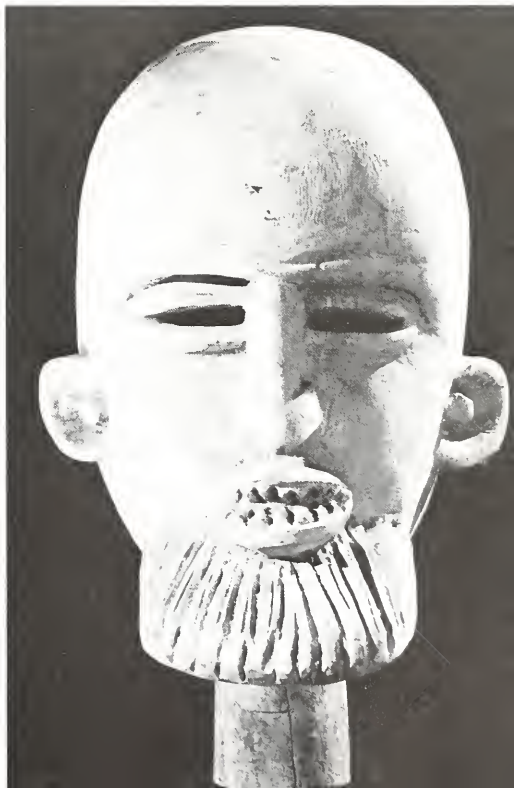






51

52







## THE WESTERN SUDAN

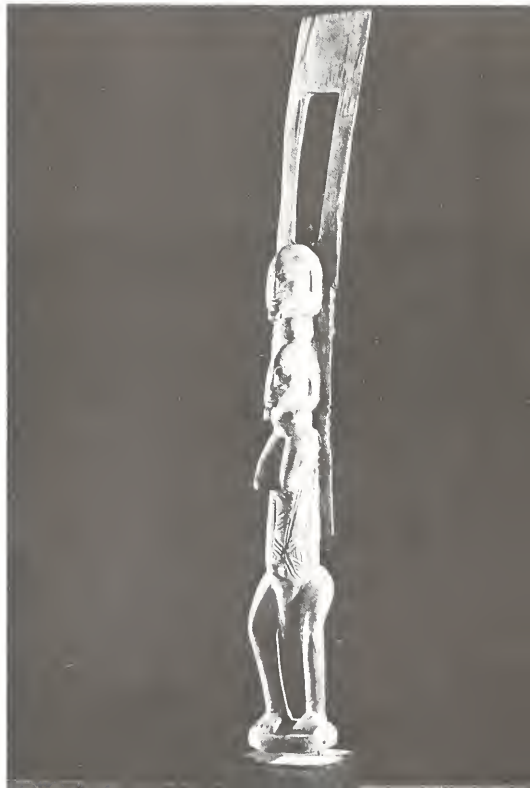
54. Standing Male Figure  
DOGON people, Mali  
Wood, 40 1/2" (103 cm.) high  
Acq. No. 7284
55. Seated Mother and Child  
DOGON people, Mali  
Wood with pigment  
46 1/16" (116.9 cm.) high  
Acq. No. 7283
56. Standing Female Figure  
DOGON people, Mali  
Wood, 29 5/8" (74.5 cm.) high  
Acq. No. 7246
57. Mask  
DOGON people, Mali  
Wood, 32 5/8" (82.9 cm.) high  
Acq. No. 7328
58. Vessel with Lid  
DOGON people, Mali  
Wood, 33 1/4" (84.5 cm.) high  
Acq. No. 7327
59. Oil Lamp  
DOGON people, Mali  
Iron, 27 1/2" (70 cm.) high  
Acq. No. 7297A
60. Oil Lamp  
DOGON people, Mali  
Iron, 27 1/2" (70 cm.) high  
Acq. No. 7297B
61. Standing Male Figure  
DOGON people, Mali  
Wood, 13 9/16" (34.2 cm.) high  
Acq. No. 7143
62. Standing Female Figure  
DOGON people, Mali  
Wood, 47 1/2" (121.6 cm.) high  
Acq. No. 7084







63. Crocodile  
DOGON people, Mali  
Wood, 43 3/4" (111 cm.) long  
Acq. No. 7293
64. Hermaphroditic Figure  
DOGON people, Mali  
Wood, 22 3/4" (57.8 cm.) high  
Acq. No. 7164
65. Kneeling Female Figure  
DOGON people, Mali  
Wood, 31 1/2" (80 cm.) high  
Acq. No. 7190
66. Stool  
DOGON people, Mali  
Wood, 9 1/2" (24 cm.) high  
Acq. No. 7124
67. Stool  
DOGON people, Mali  
Wood, 14 3/4" (37.5 cm.) high  
Acq. No. 7300





- 68. Stool  
 DOGON people, Mali  
 Wood, 14 3/4" (37.5 cm.) high  
 Acq. No. 7299
  
- 69. Dance Costume  
 DOGON people, Mali  
 Cloth and cowrie shells  
 Acq. No. 7242
  
- 70. Standing Male Figure  
 DOGON people, Mali  
 Wood, 19 1/4" (49 cm.) high  
 Acq. No. 7140
  
- 71. Door Lock  
 DOGON people, Mali  
 Wood 13 5/8" (34.6 cm.) high  
 Acq. No. 7382

67



68



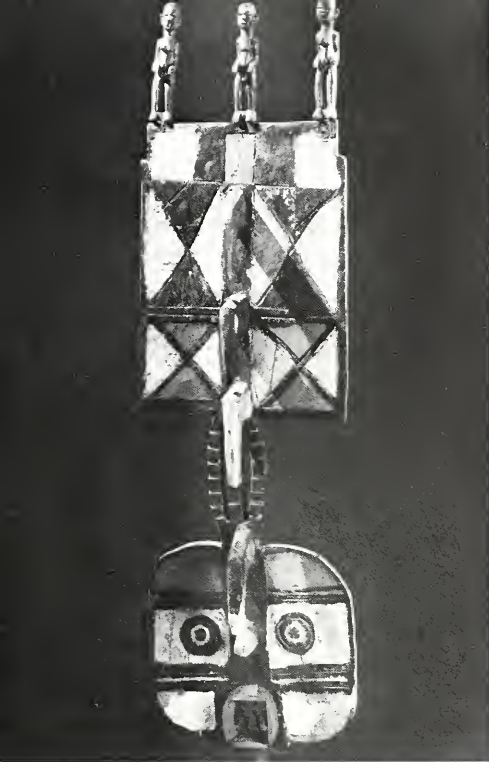


## THE WESTERN SUDAN

72. Door Lock  
DOGON people, Mali  
Wood, 13 7/8" (35.2 cm.) high  
Acq. No. 7381
73. Door Lock  
DOGON people, Mali  
Wood, 9 3/8" (23.8 cm.) high  
Acq. No. 7400
74. Walking Stick  
DOGON people, Mali  
Wood, 37 1/2" (94.6 cm.) long  
Acq. No. 7391
75. Vessel with Lid  
DOGON people, Mali  
Wood, 30 3/4" (78 cm.) high  
Acq. No. 7306
76. Mask  
GURUNSI people, Upper Volta  
Wood with pigment  
38 3/4" (98.5 cm.) high  
Acq. No. 7433
77. Mask  
GURUNSI people, Upper Volta  
Wood with pigment  
48" (121.9 cm.) high  
Acq. No. 7373
78. Loom Heddle Pulley  
GURUNSI people, upper Volta  
Wood, 11" (28 cm.) high  
Acq. No. 7393
79. Spoon  
GURUNSI people, Upper Volta  
Ivory, 7 5/8" (19.4 cm.) long  
Acq. No. 7451
80. Anklet  
GURUNSI people, Upper Volta  
Bronze, 7" (17.7 cm.) long  
Acq. No. 7372







77

81. Bracelet  
GURUNSI people, Upper Volta  
Bronze, 5" (12.7 cm.) diameter  
Acq. No. 7398



85

82. Bracelet  
GURUNSI people, Upper Volta  
Bronze, 5 1/2" (14 cm.) diameter  
Acq. No. 7399

83. Bracelet  
GURUNSI people, Upper Volta  
Wood, 4 3/8" (11.1 cm.) diameter  
Acq. No. 7396

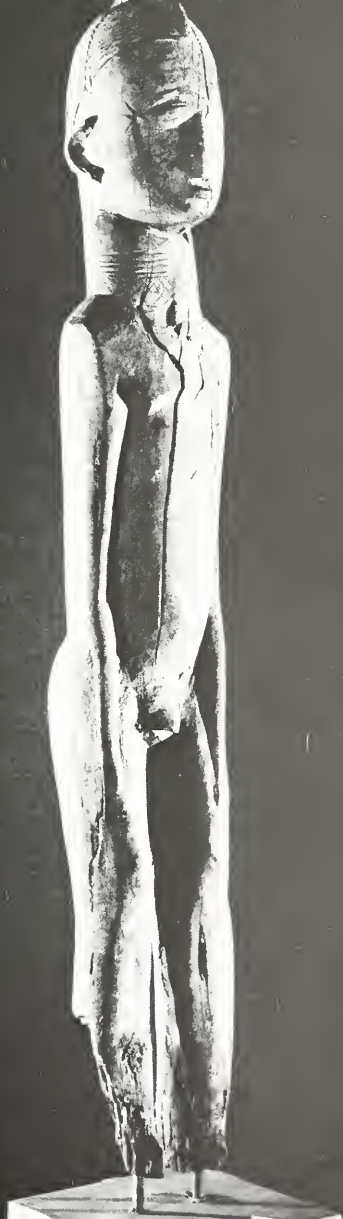


87



88





## THE WESTERN SUDAN

84. Bracelet

GURUNSI people, Upper Volta  
Ivory 4 5/8" (11.8 cm.) diameter  
Acq. No. 7397

85. Antelope Mask

KURUMBA people, Upper Volta  
Wood with pigment and seeds  
42 1/2" (107.9 cm.) high  
Acq. No. 7460

86. Mask

LOBI people, Upper Volta  
Wood with pigment  
10 3/4" (27.3 cm.) high  
Acq. No. 6957

87. Standing Male Figure

LOBI people, Upper Volta  
Wood, 14 1/4" (36.2 cm.) high  
Acq. No. 7144

88. Standing Female Figure

LOBI people, Upper Volta  
Wood, 11 7/8" (30.2 cm.) high  
Acq. No. 7165

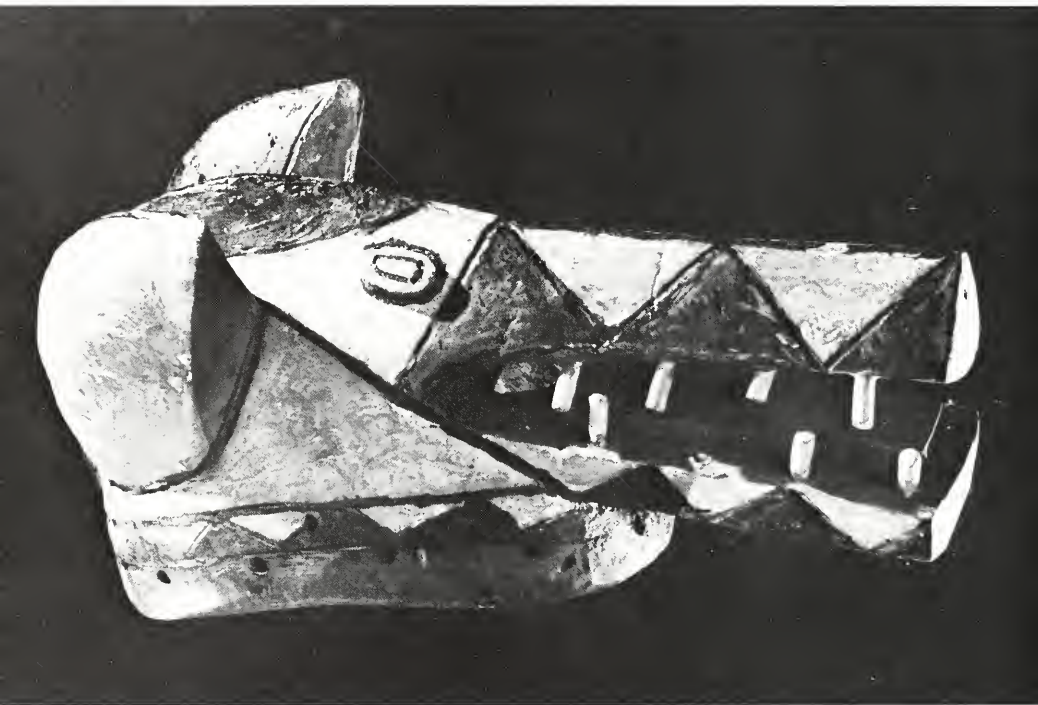
89. Standing Male Figure

LOBI people, Upper Volta  
Wood, 34 5/8" (88 cm.) high  
Acq. No. 7108



90. Standing Male Figure  
LOBI people, Upper Volta  
Wood, 32 7/8" (83.5 cm.) high  
Acq. No. 7435
91. Standing Female Figure  
LOBI people, Upper Volta  
Wood, 16 5/8" (42.2 cm.) high  
Acq. No. 6958
92. Standing Female Figure  
LOBI people, Upper Volta  
Wood, 16 7/16" (41.6 cm.) high  
Acq. No. 7301
93. Mask  
MOSSI people, Upper Volta  
Wood with pigment, 13" (33 cm.) long  
Acq. No. 7390
94. Mask  
MOSSI people, Upper Volta  
Wood, 27" (68.6 cm.) high  
Acq. No. 7231













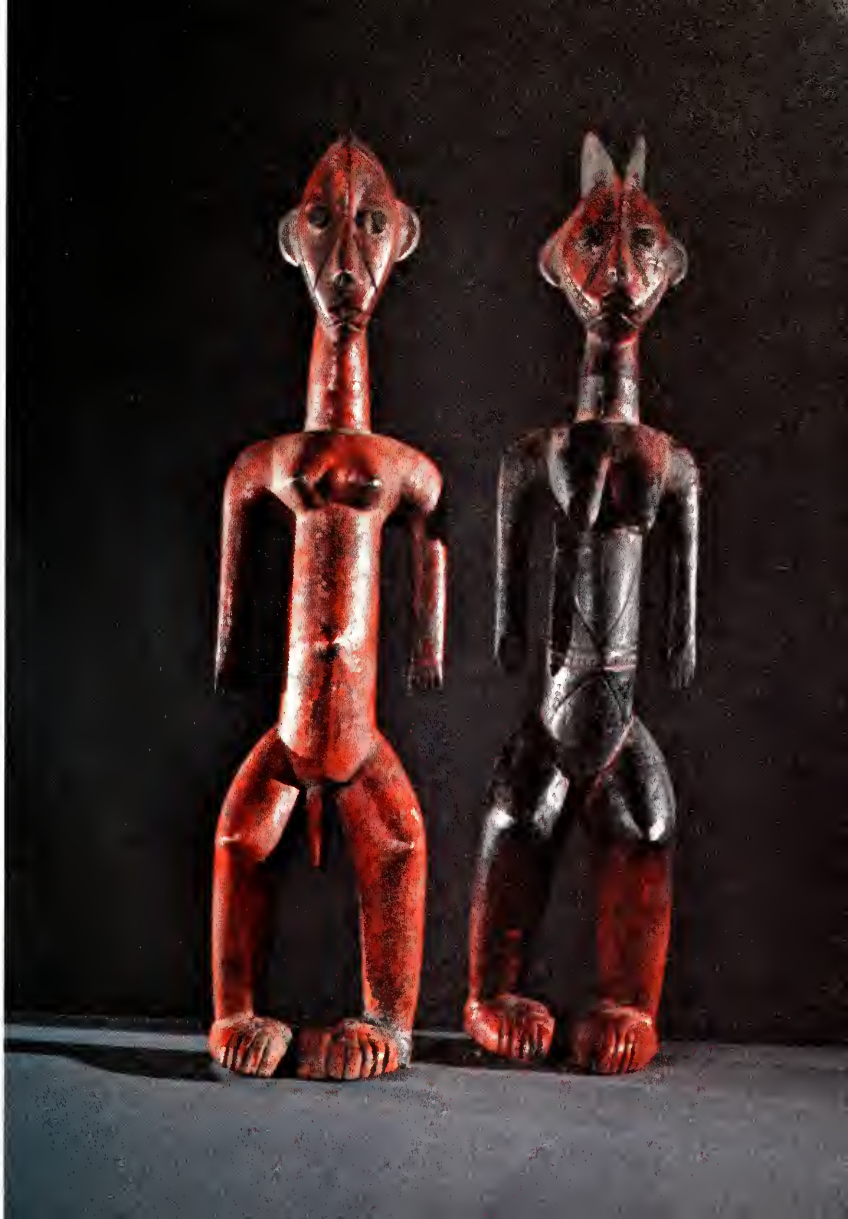
## THE WESTERN SUDAN

95. Mask  
MOSSI people, Upper Volta  
Wood with pigment  
12 1/2" (31.7 cm.) long  
Acq. No. 7450
96. Mask  
MOSSI people, Upper Volta  
Wood with pigment  
57 1/8" (145 cm.) high  
Acq. No. 7291
97. Headpiece  
MOSSI people, Upper Volta  
Wood with shells and fiber  
8 1/4" (21 cm.) high  
Acq. No. 7377
98. Mask  
MOSSI people, Upper Volta  
Wood with pigment and fiber  
41" (104 cm.) high  
Acq. No. 7379
99. Mask and Costume  
MOSSI people, Upper Volta  
Wood with fiber  
81 3/4" (207.7 cm.) high  
Acq. No. 7432
100. Mask  
MOSSI people, Upper Volta  
Wood with fiber and attached fetish  
16 1/4" (41.3 cm.) high  
Acq. No. 7431
101. Standing Male Figure  
MOSSI people, Upper Volta  
Wood with pigment  
20 7/16" (51.9 cm.) high  
Acq. No. 7388
102. Standing Female Figure  
MOSSI people, Upper Volta  
Wood with pigment  
20 7/8" (53 cm.) high  
Acq. No. 7389
103. Standing Female Figure  
MOSSI people, Upper Volta  
Wood, 22 11/16" (57.6 cm.) high  
Acq. No. 7384
104. Seated Male Figure  
MOSSI people, Upper Volta  
Bronze, 9 11/16" (24.6 cm.) high  
Acq. No. 7313
105. Standing Female Figure  
MOSSI people, Upper Volta  
Wood with Cloth  
25 1/16" (63.7 cm.) high  
Acq. No. 7374
106. Seated Mother and Child  
MOSSI people, Upper Volta  
Bronze, 9 3/8" (23.8 cm.) high  
Acq. No. 7314
107. Mask  
MOSSI people, Upper Volta  
Wood with encrustation  
25 5/8" (65.1 cm.) high  
Acq. No. 7380
108. Headpiece  
MOSSI people, Upper Volta  
Wood with pigment, cloth, and fiber  
11" (28 cm.) high  
Acq. No. 7378
109. Doll  
MOSSI people, Upper Volta  
Wood, 8 1/2" (21.6 cm.) high  
Acq. No. 7401
110. Doll  
MOSSI people, Upper Volta  
Wood, 8 1/4" (21 cm.) high  
Acq. No. 7402
111. Doll  
MOSSI people, Upper Volta  
Wood, 7 1/4" (18.5 cm.) high  
Acq. No. 7403











107

112. Doll  
MOSSI people, Upper Volta  
Wood, 11 1/2" (29.2 cm.) high  
Acq. No. 7404
113. Doll  
MOSSI people, Upper Volta  
Wood, 9" (22.9 cm.) high  
Acq. No. 7405
114. Doll  
MOSSI people, Upper Volta  
Wood, 8 1/2" (21.6 cm.) high  
Acq. No. 7406

## THE WESTERN SUDAN

115. Doll  
MOSSI people, Upper Volta  
Wood, 8 1/2" (21.6 cm.) high  
Acq. No. 7407
116. Doll  
MOSSI people, Upper Volta  
Wood, 11 1/4" (28.6 cm.) high  
Acq. No. 7408
117. Doll  
MOSSI people, Upper Volta  
Wood, 9 1/2" (24.2 cm.) high  
Acq. No. 7409
118. Doll  
MOSSI people, Upper Volta  
Wood, 8 1/4" (21 cm.) high  
Acq. No. 7410
119. Doll  
MOSSI people, Upper Volta  
Wood, 10" (25.4 cm.) high  
Acq. No. 7411
120. Doll  
MOSSI people, Upper Volta  
Wood, 9 1/2" (24.2 cm.) high  
Acq. No. 7412
121. Doll  
MOSSI people, Upper Volta  
Wood, 9" (22.9 cm.) high  
Acq. No. 7413
122. Doll  
MOSSI people, Upper Volta  
Wood, 6 3/4" (17.2 cm.) high  
Acq. No. 7414
123. Doll  
MOSSI people, Upper Volta  
Wood, 7" (17.8 cm.) high  
Acq. No. 7415





108

124. Doll  
MOSSI people, Upper Volta  
Wood, 8" (20.3 cm.) high  
Acq. No. 7416
125. Doll  
MOSSI people, Upper Volta  
Wood, 8" (20.3 cm.) high  
Acq. No. 7417
126. Doll  
MOSSI people, Upper Volta  
Wood, 6 1/4" (15.9 cm.) high  
Acq. No. 7418
127. Doll  
MOSSI people, Upper Volta  
Wood, 6 3/4" (17.2 cm.) high  
Acq. No. 7419

## THE WESTERN SUDAN

128. Doll  
MOSSI people, Upper Volta  
Wood, 8 3/4" (22.2 cm.) high  
Acq. No. 7420
129. Doll  
MOSSI people, Upper Volta  
Wood, 10 1/2" (26.8 cm.) high  
Acq. No. 7421
130. Doll  
MOSSI people, Upper Volta  
Wood, 7 1/4" (18.4 cm.) high  
Acq. No. 7422
131. Door Lock  
MOSSI people, Upper Volta  
Wood, 23 5/16" (59.2 cm.) high  
Acq. No. 7375
132. Door Lock  
MOSSI people, Upper Volta  
Wood, 22" (55.9 cm.) high  
Acq. No. 7376
133. Hair Ornaments (five)  
MOSSI people, Upper Volta  
Bronze, 3 1/8" (8 cm.) long  
Acq. No. 7371
134. Hair Ornament  
MOSSI people, Upper Volta  
Ivory, 4 7/8" (12.4 cm.) long  
Acq. No. 7370
135. Bracelet  
MOSSI people, Upper Volta  
Bronze, 2 15/16" (7.5 cm.) diameter  
Acq. No. 7365
136. Bracelet  
MOSSI people, Upper Volta  
Bronze, 3" (7.6 cm.) diameter  
Acq. No. 7366

## THE WESTERN SUDAN

### 137. Bracelet

MOSSI people, Upper Volta  
Bronze, 3 3/4" (9.5 cm.) diameter  
Acq. No. 7364

### 138. Bracelet

MOSSI people, Upper Volta  
Bronze, 3 7/8" (10 cm.) diameter  
Acq. No. 7367

### 139. Bracelet

MOSSI people, Upper Volta  
Bronze, 4" (10.1 cm.) diameter  
Acq. No. 7363

### 140. Bracelets (pair)

MOSSI people, Upper Volta  
Stone, 3 7/8" (9.9 cm.) diameter  
Acq. No. 7395

### 141. Belt

MOSSI people, Upper Volta  
Shell, 32" (81.2 cm.) long  
Acq. No. 7361

### 142. Belt

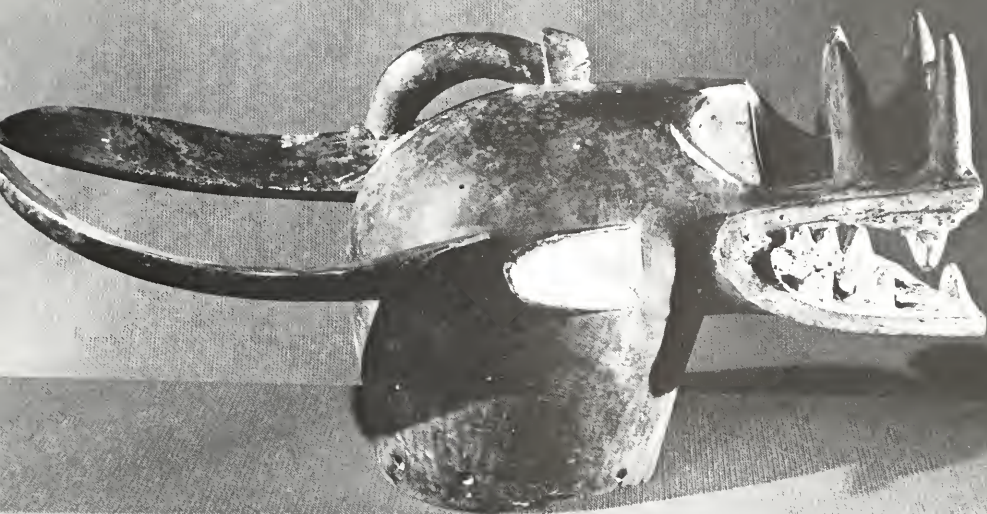
MOSSI people, Upper Volta  
Shell and glass beads  
32" (81.2 cm.) long  
Acq. No. 7362

109-130





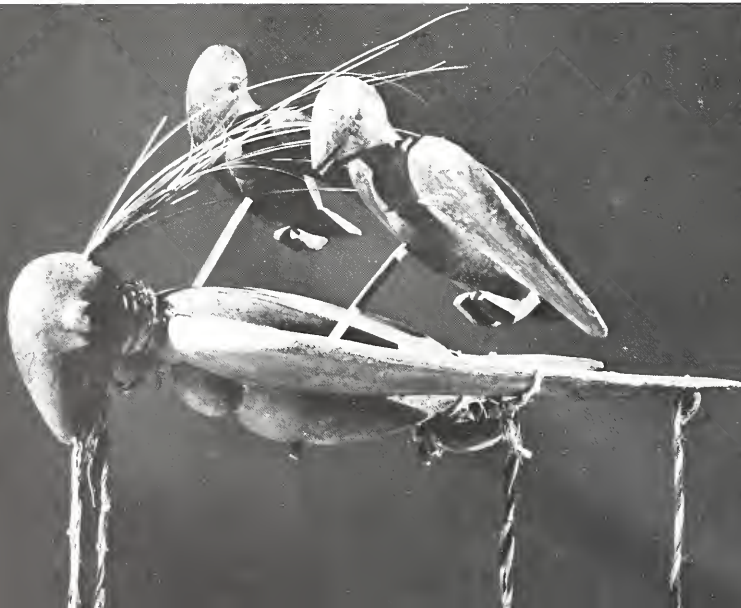


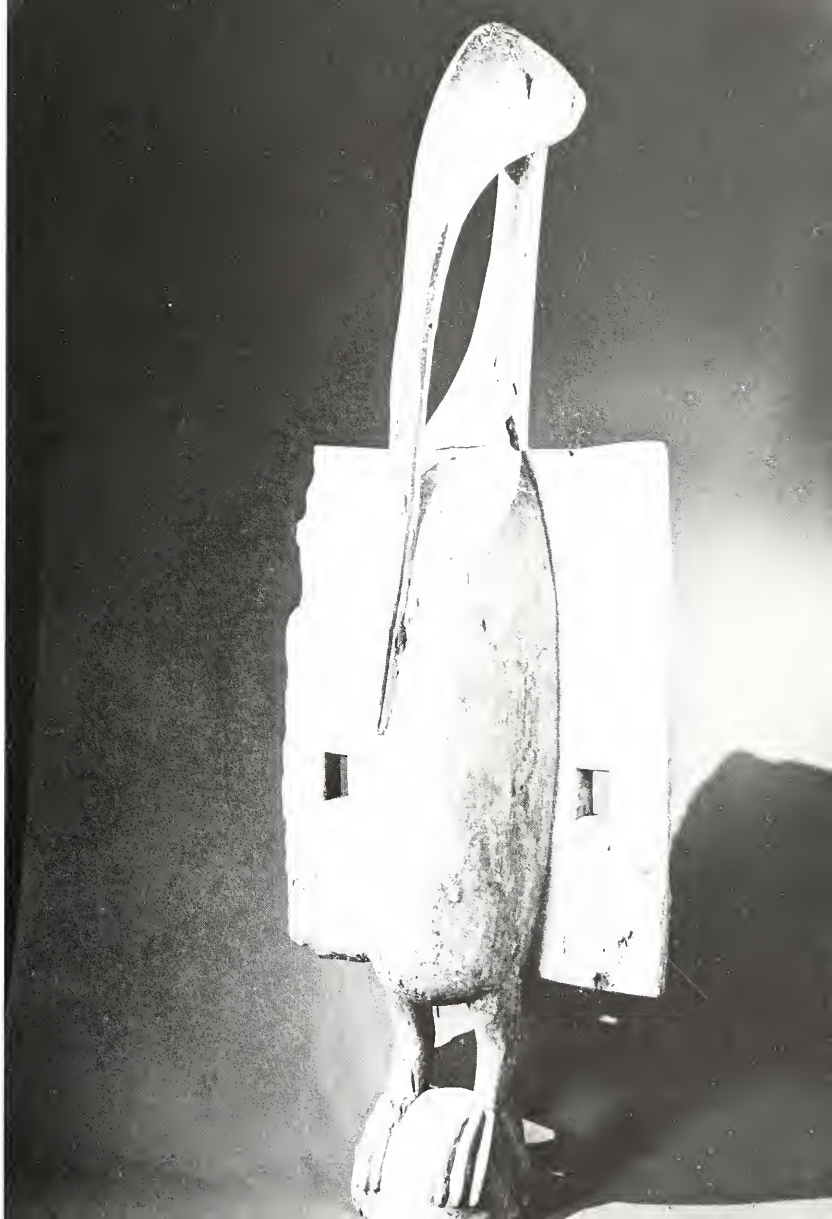


143. Door Lock  
SAMO people, Upper Volta  
Wood, 24 1/4" (61.5 cm.) high  
Acq. No. 7383
144. Dance Costume  
SAMO people, Upper Volta  
Shells, Cloth, and hide  
Acq. No. 7452
145. Mask  
SARAKOLE people, Mali  
Wood with metal and pigment  
13" (33 cm.) high  
Acq. No. 7320
146. Standing Male Figure  
SENUFO people, Ivory Coast  
Wood, 55 15/16" (141.8 cm.) high  
Acq. No. 7352
147. Vessel with Lid  
SENUFO people, Ivory Coast  
Wood, 31 1/2" (80 cm.) high  
Acq. No. 7340
148. Mask  
SENUFO people, Ivory Coast  
Wood with pigment  
32 1/2" (82.6 cm.) long  
Acq. No. 7121
149. Male Rhythm Pounder  
SENUFO people, Ivory Coast  
Wood, 36 1/2" (92.7 cm.) high  
Acq. No. 7091
150. Mask  
SENUFO people, Ivory Coast  
Wood with pigment  
28 1/2" (72.4 cm.) long  
Acq. No. 7167

## THE WESTERN SUDAN

151. Bird  
SENUFO people, Ivory Coast  
Wood, 79 3/4" (202.5 cm.) high  
Acq. No. 7436
152. Seated Female Figure  
SENUFO people, Ivory Coast  
Wood, 12 7/8" (32.8 cm.) high  
Acq. No. 7141
153. Mask  
SENUFO people, Ivory Coast  
Wood, 29 1/8" (74 cm.) high  
Acq. No. 7308
154. Standing Female Figure  
SENUFO people, Ivory Coast  
Wood, 8 1/2" (21.6 cm.) high  
Acq. No. 7137
155. Standing Female Figure  
SENUFO people, Ivory Coast  
Wood, 8 1/4" (21 cm.) high  
Acq. No. 7138
156. Mask  
SENUFO people, Ivory Coast  
Wood with feathers and hide  
17 1/16" (43.3 cm.) high  
Acq. No. 7118
157. Seated Figure  
SENUFO people, Ivory Coast  
Wood, 34 3/4" (88.2 cm.) high  
Acq. No. 7425
158. Bird  
SENUFO people, Ivory Coast  
Wood, 59 1/2" (151 cm.) high  
Acq. No. 7237





## THE WESTERN SUDAN

159. Seated Female Figure  
SENUFO people, Ivory Coast  
Wood, 12 7/16" (31.6 cm.) high  
Acq. No. 7145
160. Ceremonial Harvest Birds  
SENUFO people, Ivory Coast  
Wood with feathers and fibers  
16 1/4" (41.3 cm.) long  
Acq. No. 7087
161. Ceremonial Staff  
SENUFO people, Ivory Coast  
Wood, 12 1/2" (31.7 cm.) figure height  
Acq. No. 7128
162. Standing Female Figure  
SENUFO people, Ivory Coast  
Wood, 15 5/8" (39.7 cm.) high  
Acq. No. 7286
163. Ceremonial Staff Ornament  
SENUFO people, Ivory Coast  
Wood, 13 5/8" (34.6 cm.) high  
Acq. No. 7126
164. Ceremonial Staff Ornament  
SENUFO people, Ivory Coast  
Wood, 11" (28 cm.) high  
Acq. No. 7127
165. Buffalo  
SENUFO people (?), Ivory Coast  
Bronze, 12 11/16" (32.3 cm.) long  
Acq. No. 7339
166. Ceremonial Staff Ornament  
SENUFO people, Ivory Coast  
Wood, 8 1/2" (21 cm.) high  
Acq. No. 7125
167. Ceremonial Sword  
SENUFO people, Ivory Coast  
Wood, 38 3/4" (98.5 cm.) long  
Acq. No. 7241
168. Warrior's Shirt  
SENUFO people, Ivory Coast  
Cloth with amulets  
27" x 33" (68.6 x 83.8 cm.)  
Acq. No. 7465
169. Warrior's Helmet  
SENUFO people, Ivory Coast  
Hide, horns, shells, and cloth  
13 1/2" (34.3 cm.) high  
Acq. No. 7466
170. Bracelet  
SENUFO people, Ivory Coast  
Brass, 2 7/8" (7.3 cm.) diameter  
Acq. No. 7210
171. Bracelet  
SENUFO people, Ivory Coast  
Brass, 2 3/4" (7 cm.) diameter  
Acq. No. 7211
172. Bracelet  
SENUFO people, Ivory Coast  
Brass, 2 7/8" (7.3 cm.) diameter  
Acq. No. 7209
173. Bracelet  
SENUFO people, Ivory Coast  
Brass, 2 1/2" (6.4 cm.) diameter  
Acq. No. 7213
174. Bracelet  
SENUFO people, Ivory Coast  
Brass, 2 3/4" (7 cm.) diameter  
Acq. No. 7214
175. Bracelet  
SENUFO people, Ivory Coast  
Brass, 2 1/16" (5.2 cm.) diameter  
Acq. No. 7212
176. Bracelet  
SENUFO people, Ivory Coast  
Brass, 2 3/4" (7 cm.) diameter  
Acq. No. 7216







## THE WESTERN SUDAN

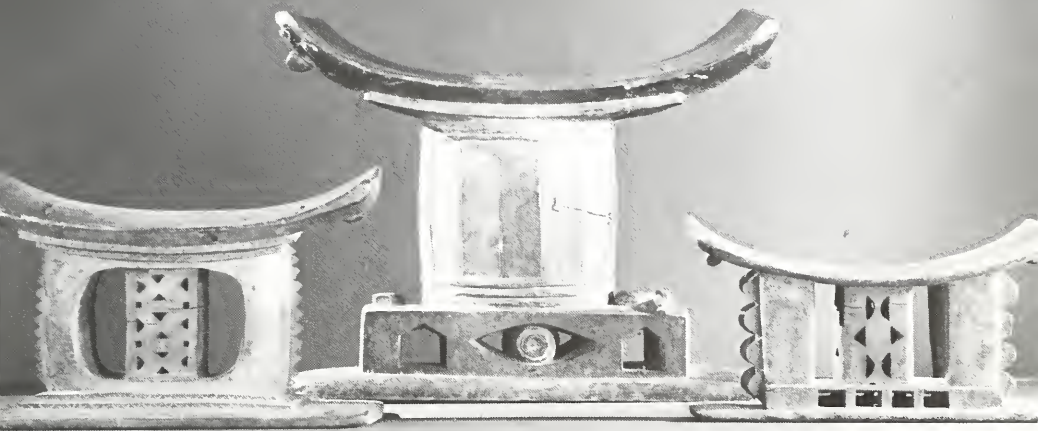
177. Bracelet  
SENUFO people, Ivory Coast  
Brass, 2 5/8" (6.7 cm.) diameter  
Acq. No. 7215
178. Balafon Musical Instrument  
Upper Volta region  
Wood and gourds  
47 15/16" (121.8 cm.) long  
Acq. No. 7453
179. Whistle  
Upper Volta Region  
Wood, 3 1/2" (8.9 cm.) long  
Acq. No. 7456
180. Whistle  
Upper Volta region  
Wood, 3 7/8" (9.8 cm.) long  
Acq. No. 7455
181. Powder Horn  
Western Sudan region  
Ivory, hide, and fiber  
15 9/16" (39.5 cm.) long  
Acq. No. 7280



# THE WESTERN GUINEA COAST

182. Reliquary Head  
AGNI people, Ivory Coast  
Terra Cotta, 6 3/8" (16.3 cm.) high  
Acq. No. 7194
183. Fertility Figure  
ASHANTI people, Ghana  
Wood, 9 3/8" (23.8 cm.) high  
Acq. No. 7156
184. Fertility Figure  
ASHANTI people, Ghana  
Wood, 11" (27.9 cm.) high  
Acq. No. 6981
185. Fertility Figure  
ASHANTI people, Ghana  
Wood, 11 1/4" (28.6 cm.) high  
Acq. No. 7257
186. Fertility Figure  
ASHANTI people, Ghana  
Wood, 10 5/8" (27 cm.) high  
Acq. No. 7155
187. Drum  
ASHANTI people, Ghana  
Wood, 36" (91.4 cm.) high  
Acq. No. 7461
188. Stool  
ASHANTI people, Ghana  
Wood, 19 1/8" (48.6 cm.) long  
Acq. No. 7355
189. Stool  
ASHANTI people, Ghana  
Wood, 17 1/2" (44.4 cm.) long  
Acq. No. 7356
190. Stool  
ASHANTI people, Ghana  
Wood, 16 3/4" (42.5 cm.) long  
Acq. No. 7353





188/191/192

- |   |  |
|---|--|
| <p>191. Stool<br/>ASHANTI people, Ghana<br/>Wood, 27 1/4" (69.2 cm.) long<br/>Acq. No. 7357</p>               | <p>194. Comb<br/>ASHANTI people, Ghana<br/>Wood, 11 1/8" (28.2 cm.) long<br/>Acq. No. 7276</p>                           |
| <p>192. Stool<br/>ASHANTI people, Ghana<br/>Wood, 17 7/16" (44.3 cm.) long<br/>Acq. No. 7354</p>              | <p>195. Ceremonial Sword<br/>ASHANTI people, Ghana<br/>Metal and wood<br/>27 1/8" (68.9 cm.) long<br/>Acq. No. 7478</p>  |
| <p>193. Chair<br/>ASHANTI people, Ghana<br/>Wood with metal<br/>28 1/8" (71.4 cm.) high<br/>Acq. No. 7338</p> | <p>196. Gold Weights (15)<br/>ASHANTI people, Ghana<br/>Brass, approx. 1/2" to 1" (1.3 to 2.6 cm.)<br/>Acq. No. 7197</p> |







202

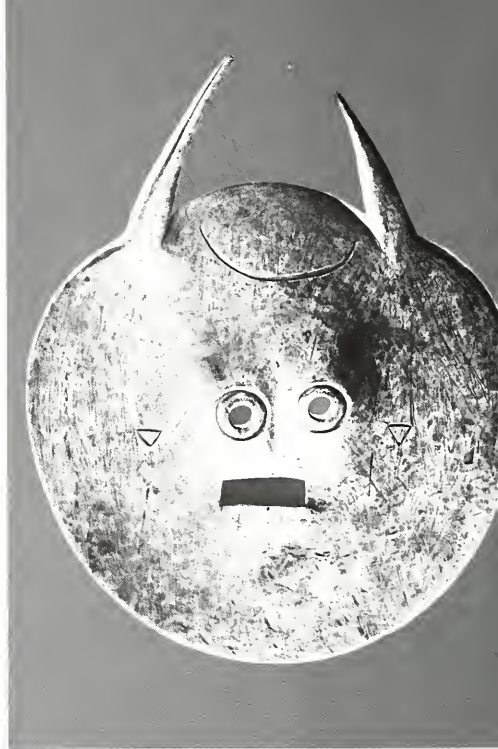
## THE WESTERN SUDAN

197. Harvest Fertility Figure  
BAGA people, Guinea  
Wood, 37 3/16" (94.4 cm.) long  
Acq. No. 7304
198. Shoulder Mask  
BAGA people, Guinea  
Wood with metal  
47 5/8" (120.8 cm.) high  
Acq. No. 7462
199. Harvest Fertility Figure  
BAGA people, Guinea  
Wood, 34 11/16" (87.5 cm.) long  
Acq. No. 7266
200. Mask  
BASSA people, Liberia  
Wood, 7 1/2" (19 cm.) high  
Acq. No. 7151
201. Standing Monkey Figure  
BAULE people, Ivory Coast  
Wood, 21 1/2" (54.6 cm.) high  
Acq. No. 7183
202. Drum  
BAULE people, Ivory Coast  
Wood with pigment,  
25 1/2" (64.8 cm.) high  
Acq. No. 7437
203. Loom Heddle Pulley  
BAULE people, Ivory Coast  
Wood, 8 3/4" (22.2 cm.) high  
Acq. No. 7177
204. Chief's Stool  
BAULE people, Ivory Coast  
Wood with fiber, 31 3/4" (80.5 cm.) high  
Acq. No. 7078
205. Monkey Figure  
BAULE people, Ivory Coast  
Wood with encrustation  
22 1/4" (56.2 cm.) high  
Acq. No. 7184



207

206. Standing Male Figure  
BAULE people, Ivory Coast  
Wood with pigment  
15 15/16" (40.5 cm.) high  
Acq. No. 7147
207. Buffalo Mask  
BAULE people, Ivory Coast  
Wood with pigment  
20" (50.8 cm.) high  
Acq. No. 7290



208

208. Cow Mask  
BAULE people, Ivory Coast  
Wood, 14 1/2" (36.9 cm.) high  
Acq. No. 7092
209. Standing Figure  
BAULE people, Ivory Coast  
Wood with encrustation  
7 7/16" (18.9 cm.) high  
Acq. No. 7154

THE WESTERN GUINEA COAST

210. Standing Female Figure

BAULE people, Ivory Coast

Wood, 18 3/4" (47.7 cm.) high

Acq. No. 7095

211. Divination Bowl

BAULE people, Ivory Coast

Wood, gourd, and hide

7" (17.8 cm.) high

Acq. No. 7086

212. Standing Male Figure

BAULE people, Ivory Coast

Wood, 30 1/2" (77.4 cm.) high

Acq. No. 7193

213. Standing Female Figure

BAULE people, Ivory Coast

Wood, 17" (43.2 cm.) high

Acq. No. 7348











215

- 214. Standing Female Figure  
BAULE people, Ivory Coast  
Wood, 15" (38.1 cm.) high  
Acq. No. 7166
  
- 215. Standing Female Figure  
BAULE people, Ivory Coast  
Wood, 15 1/4" (38.7 cm.) high  
Acq. No. 7133
  
- 216. Horn  
BAULE people, Ivory Coast  
Ivory, 16 15/16" (43 cm.) long  
Acq. No. 7187

## THE WESTERN GUINEA COAST

217. Seated Female Figure  
BAULE people, Ivory Coast  
Wood, 16 5/8" (42.3 cm.) high  
Acq. No. 7130
218. Standing Female Figure  
BAULE people, Ivory Coast  
Wood, 11" (28 cm.) high  
Acq. No. 7134
219. Standing Female Figure  
BAULE people, Ivory Coast  
Wood, 17 9/16" (44.6 cm.) high  
Acq. No. 7142
220. Two Alligators  
BAULE people, Ivory Coast  
Wood with inlaid ivory  
26" (66 cm.) long  
Acq. No. 7104
221. Fly Whisk  
BAULE people, Ivory Coast  
Wood with hair, 15 1/8" (38.4 cm.) long  
Acq. No. 7349
222. Fly Whisk Head  
BAULE people, Ivory Coast  
Wood, 15 5/16" (38.9 cm.) long  
Acq. No. 7345
223. Fly Whisk Head  
BAULE people, Ivory Coast  
Wood, 16 1/4" (41.3 cm.) long  
Acq. No. 7344
224. Fly Whisk Head  
BAULE people, Ivory Coast  
Wood, 13 7/8" (35.2 cm.) long  
Acq. No. 7158
225. Fly Whisk Head  
BAULE people, Ivory Coast  
Wood, 15 7/8" (40.3 cm.) long  
Acq. No. 7157





226. Loom Heddle Pulley  
BAULE people, Ivory Coast  
Wood, 5 1/2" (14 cm.) high  
Acq. No. 7170
227. Loom Heddle Pulley  
BAULE people, Ivory Coast  
Wood, 6 7/16" (16.3 cm.) high  
Acq. No. 7173
228. Whip  
BAULE people, Ivory Coast  
Wood with cloth and hide  
34" (86.3 cm.) long  
Acq. No. 7346
229. Spoon  
BAULE people, Ivory Coast  
Wood, 18 5/16" (46.5 cm.) long  
Acq. No. 7254
230. Spoon  
BAULE people, Ivory Coast  
Wood, 19 5/8" (49.9 cm.) long  
Acq. No. 7252

231. Loom Heddle Pulley  
BAULE people, Ivory Coast  
Wood, 11" (28 cm.) high  
Acq. No. 7176

232. Loom Heddle Pulley  
BAULE people, Ivory Coast  
Wood, 6 15/16" (17.7 cm.) high  
Acq. No. 7255

231



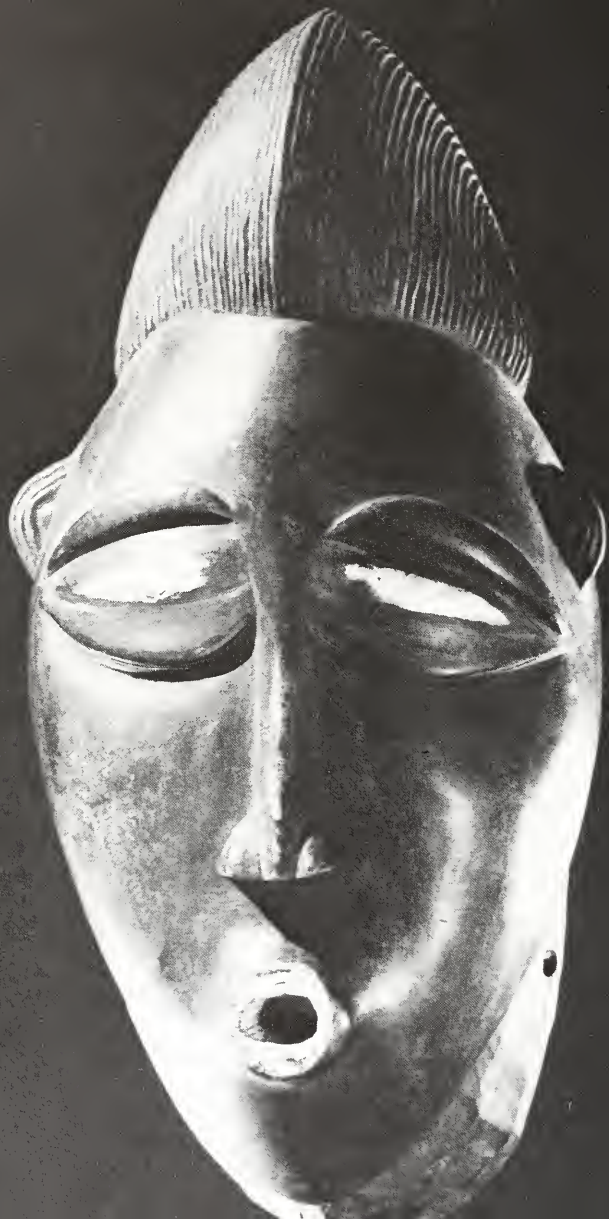
233. Stool  
BAULE people, Ivory Coast  
Wood, 16 3/4" (42.5 cm.) long  
Acq. No. 7090

234. Standing Male Figure  
BAULE people, Ivory Coast  
Wood, 15 9/16" (39.5 cm.) high  
Acq. No. 7146

234







# THE WESTERN GUINEA COAST

235. Mask  
BAULE people, Ivory Coast  
Wood with pigment  
14 3/8" (36.5 cm.) high  
Acq. No. 7186
236. Mask  
DAN-NGERE people, Ivory Coast  
Wood with fiber, 13" (33 cm.) high  
Acq. No. 7230
237. Mask  
DAN-NGERE people, Ivory Coast  
Wood with cloth  
14 11/16" (37.3 cm.) high  
Acq. No. 7109
238. Mask  
DAN-NGERE people, Ivory Coast  
Wood with cloth  
11 7/8" (30.2 cm.) high  
Acq. No. 7195
239. Mask  
DAN-NGERE people, Ivory Coast  
Wood with metal  
10 1/4" (26 cm.) high  
Acq. No. 7111
240. Mask  
DAN-NGERE people, Ivory Coast  
Wood with hair and feathers  
10 1/2" (26.7 cm.) high  
Acq. No. 7120





239

241. Mask  
DAN-NGERE people, Ivory Coast  
Wood with cloth and hair  
11 1/4" (28.5 cm.) high  
Acq. No. 7163
242. Mask  
DAN-NGERE people, Ivory Coast  
Wood with metal  
8 15/16" (22.8 cm.) high  
Acq. No. 7112
243. Mask  
DAN-NGERE people, Ivory Coast  
Wood with shells  
9 3/4" (24.8 cm.) high  
Acq. No. 7162





242



243

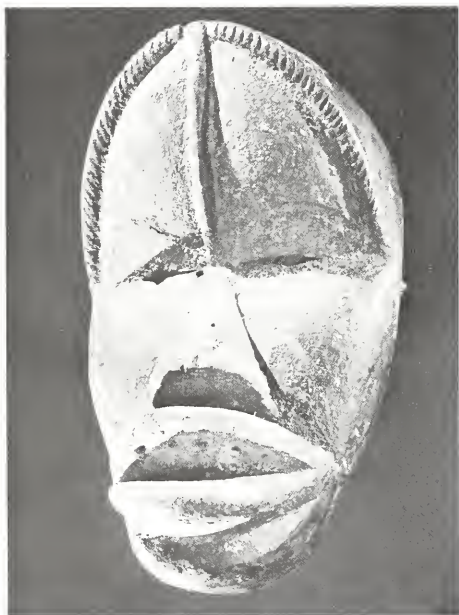




## THE WESTERN GUINEA COAST

244. Mask  
DAN-NGERE people, Ivory Coast  
Wood with hair  
10 1/2" (26.7 cm.) high  
Acq. No. 7159
245. Mask  
DAN-NGERE people, Ivory Coast  
Wood with fiber, 13" (33 cm.) high  
Acq. No. 7230
246. Mask  
DAN-NGERE people, Ivory Coast  
Wood, 11 1/2" (29.3 cm.) high  
Acq. No. 7113
247. Mask  
DAN-NGERE people, Ivory Coast  
Wood with metal and hair  
10 1/8" (25.7 cm.) high  
Acq. No. 6956
248. Mask  
DAN-NGERE people, Ivory Coast  
Wood, 11" (28 cm.) high  
Acq. No. 7150
249. Standing Female Figure  
DAN-NGERE people, Ivory Coast  
Wood, 37 1/4" (94.5 cm.) high  
Acq. No. 7192
250. Spoon  
DAN-NGERE people, Ivory Coast  
Wood with metal  
27" (68.7 cm.) long  
Acq. No. 7188
251. Mask  
DAN-NGERE people, Ivory Coast  
Wood with fur and metal  
11 3/4" (29.8 cm.) high  
Acq. No. 7129
252. Bracelet  
DAN-MANO people, Ivory Coast  
Brass, 4 1/2" (11.5 cm.) diameter  
Acq. No. 7181





246



247



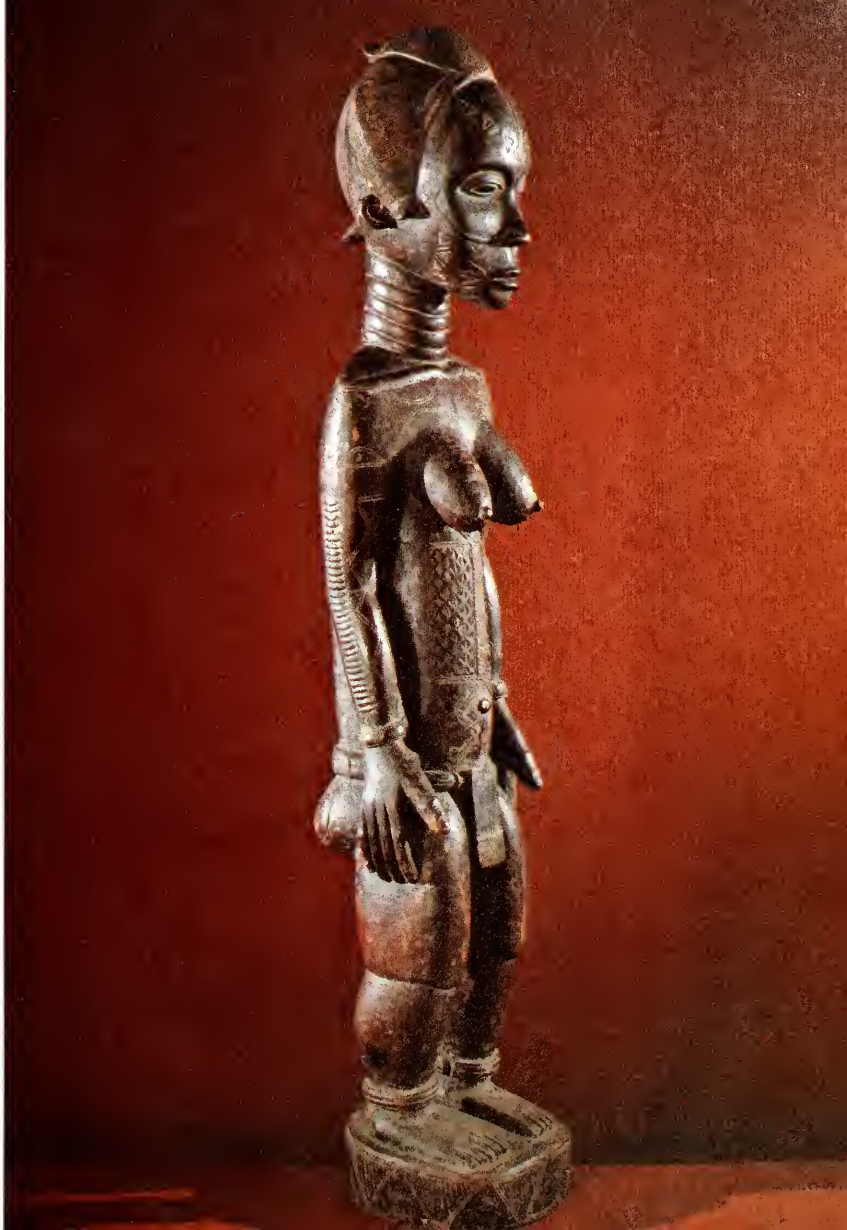


241



245







253. Bracelet  
DAN-MANO people, Ivory Coast  
Brass, 6 1/16" (15.5 cm.) diameter  
Acq. No. 7179
254. Bracelet  
DAN-MANO people, Ivory Coast  
Brass, 5 1/8" (13 cm.) diameter  
Acq. No. 7178
255. Bracelet  
DAN-MANO people, Ivory Coast  
Brass, 4 13/16" (12.2 cm.) diameter  
Acq. No. 7180
256. Bracelet  
DAN-MANO people, Ivory Coast  
Brass, 5 1/2" (14 cm.) diameter  
Acq. No. 7182
257. Rattle  
DIONLA people, Ivory Coast  
Wood and hide  
23 5/8" (60 cm.) long  
Acq. No. 7097
258. Musical Instrument  
FULANI people, Liberia  
Wood and hide  
26 1/2" (67.4 cm.) long  
Acq. No. 7247
259. Musical Instrument  
FULANI people, Liberia  
Wood and hide  
27" (68.6 cm.) long  
Acq. No. 7489
260. Turtle  
GARBI people, Liberia  
Wood with cloth and teeth  
16 1/4" (41.2 cm.) long  
Acq. No. 7234
261. Textile  
Ghana region  
Silk and cotton  
4 1/4" x 78" (10.8 x 198.1 cm.)  
Acq. No. 6920
262. Textile  
Ghana region  
Silk and cotton  
3 3/4" x 73" (9.5 x 185.4 cm.)  
Acq. No. 6921
263. Textile  
Ghana region  
Silk and cotton  
4" x 72" (10.2 x 184.1 cm.)  
Acq. No. 6922
264. Textile  
Ghana region  
15 3/4" x 74" (40 x 187.9 cm.)  
Acq. No. 6923











265. Bracelet  
GIO people, Liberia  
Brass, 6" (15.3 cm.) diameter  
Acq. No. 7205
266. Helmet Mask  
GOLA people, Liberia  
Wood with fiber  
23 1/4" (59 cm.) high  
Acq. No. 7096
267. Helmet Mask  
GOLA people, Liberia  
Wood with fiber  
27 3/4" (70.5 cm.) high  
Acq. No. 7102
268. Helmet Mask  
GOLA/DE/VAI people, Liberia  
Wood, 14 3/4" (37.5 cm.) high  
Acq. No. 7105
269. Helmet Mask  
GOLA/DE/VAI people, Liberia  
Wood, 16 1/4" (41.3 cm.) high  
Acq. No. 7132
270. Helmet Mask  
GOLA/DE/VAI people, Liberia  
Wood, 13 1/8" (33.3 cm.) high  
Acq. No. 7106



271. Mask

GREBO people, Liberia  
Wood, 12" (30.5 cm.) high  
Acq. No. 7110

272. Mask

GREBO people, Liberia  
Wood, 5 1/8" (13.4 cm.) high  
Acq. No. 7152

273. Drum

GREBO people, Liberia  
Wood, 72 15/16" (185.1 cm.) high  
Acq. No. 7426

274. Bowl

GREBO people, Liberia  
Wood, 11 3/8" (29 cm.) diameter  
Acq. No. 7082

275. Bowl

GREBO people, Liberia  
Wood, 10 3/8" (26.4 cm.) diameter  
Acq. No. 7081

276. Bowl

BREBO people, Liberia  
Wood, 10 3/8" (26.4 cm.) diameter  
Acq. No. 7080

271



280





300

## THE WESTERN GUINEA COAST

277. Standing Female Figure  
Guinea region  
Wood, 12 13/16" (32.6 cm.) high  
Acq. No. 7139
278. Mask  
GURO people (?), Ivory Coast  
Wood, 19" (48.2 cm.) high  
Acq. No. 7114
279. Mask  
GURO people (?), Ivory Coast  
Wood with pigment  
14 3/16" (36.1 cm.) high  
Acq. No. 7148
280. Mask  
GURO people, Ivory Coast  
Wood, 12 9/16" (31.9 cm.) high  
Acq. No. 7149
281. Loom Heddle Pulley  
Ivory Coast region  
Wood, 6 1/8" (15.7 cm.) high  
Acq. No. 7174
282. Loom Heddle Pulley  
Ivory Coast region  
Wood, 6 5/16" (16 cm.) high  
Acq. No. 7169
283. Loom Heddle Pulley  
Ivory Coast region  
Wood, 5 5/8" (14.3 cm.) high  
Acq. No. 7171

284. Loom Heddle Pulley  
Ivory Coast region  
Wood, 9 3/8" (23.8 cm.) high  
Acq. No. 7172
285. Bracelet  
Ivory Coast region  
Bronze, 4 1/8" (10.5 cm.) diameter  
Acq. No. 7447
286. Bracelet  
Ivory Coast region  
Ivory, 2 1/8" (5.4 cm.) diameter  
Acq. No. 7201
287. Bracelet  
Ivory Coast region  
Bronze, 3 1/8" (8 cm.) diameter  
Acq. No. 7448
288. Ring  
Ivory Coast region  
Bronze, 1 3/4" (4.5 cm.) diameter  
Acq. No. 7449
289. Seven Amulets  
Ivory Coast region  
Brass, approx. 1"x1" (2.6 x 2.6 cm.)  
Acq. No. 7196















## THE WESTERN GUINEA COAST

290. Bracelet  
Ivory Coast region  
Ivory, 3 9/16" (9.1 cm.) diameter  
Acq. No. 7198
291. Painted Fabric  
Ivory Coast region  
Cotton, 86" x 61" (218.3 x 154.9 cm.)  
Acq. No. 7235
292. Warrior's Shirt  
Ivory Coast region  
Cotton with pigment  
30" x 30" (76.2 x 76.2 cm.)  
Acq. No. 7245
293. Necklace  
Ivory Coast region  
Bronze, 20" (50.8 cm.) long  
Acq. No. 7454
294. Necklace  
Ivory Coast region  
Glass, multicolored  
29" (73.8 cm.) long  
Acq. No. 6939
295. Necklace  
Ivory Coast region  
Stone, 34" (86.3 cm.) long  
Acq. No. 6938
296. Necklace  
Ivory Coast region  
Bronze, 26" (66 cm.) long  
Acq. No. 7446
297. Necklace  
Ivory Coast region  
Glass, multicolored  
30" (76.2 cm.) long  
Acq. No. 6689
298. Bracelet  
Ivory Coast region  
Ivory, 2 1/16" (5.3 cm.) diameter  
Acq. No. 7202
299. Bracelet  
Ivory Coast region  
Ivory, 3 5/16" (8.4 cm.) diameter  
Acq. No. 7200
300. Mask  
KISSI people (?), Guinea  
Wood with horn and encrustation  
28 1/2" (72.4 cm.) high  
Acq. No. 7343
301. Mask  
KRAN people, Ivory Coast  
Wood with pigment and cloth  
13 1/4" (33.7 cm.) high  
Acq. No. 7115
302. Mask  
KRAN people, Ivory Coast  
Wood with cloth  
8 3/4" (22.2 cm.) high  
Acq. No. 7161
303. Bracelet  
KRAN people, Ivory Coast  
Brass, 4" (10.2 cm.) diameter  
Acq. No. 7207
304. Bracelet  
KRU people, Liberia  
Bronze, 2 1/4" (5.7 cm.) diameter  
Acq. No. 7243B
305. Bracelet  
KRU people, Liberia  
Bronze, 3" (7.6 cm.) diameter  
Acq. No. 7243A
306. Ring  
KRU people, Liberia  
Brass, 1 7/8" (4.8 cm.) diameter  
Acq. No. 7220
307. Warrior's Shirt with Amulets  
Liberia region  
Cotton, handwoven; leather amulets  
26" x 21" (66 x 53.3 cm.)  
Acq. No. 7236



## THE WESTERN GUINEA COAST

308. Textile  
Liberia region  
Cotton, handwoven  
62" x 84" (157.4 x 213.3 cm.)  
Acq. No. 4612
309. Textile  
Liberia region  
Cotton, handwoven  
48" x 78" (121.8 x 198.2 cm.)  
Acq. No. 7248
310. Textile  
Liberia region  
Cotton, handwoven  
28" x 83" (71.1 x 210.7 cm.)  
Acq. No. 7249
311. Game Board  
Liberia region  
Wood, 26 15/16" (68.4 cm.) long  
Acq. No. 7101
312. Bracelet  
Liberia region  
Ivory, 3 11/16" (9.6 cm.) diameter  
Acq. No. 7206
313. Bracelet  
Liberia region  
Brass, 6 7/8" (17.5 cm.) diameter  
Acq. No. 7219
314. Bracelet  
Liberia region  
Brass, 3 1/4" (8.3 cm.) diameter  
Acq. No. 7221
315. Mask  
LOGI people, Senegal  
Wood, 28" (71.1 cm.) high  
Acq. No. 7282
316. Helmet Mask  
LOMA people, Liberia  
Wood, 12 7/8" (32.7 cm.) high  
Acq. No. 7107





317. Standing Male Figure  
MANDINGO people, Liberia/Guinea  
Wood, 11" (27.9 cm.) high  
Acq. No. 7135

318. Mask  
MANO people, Liberia  
Wood, 3 3/4" (9.5 cm.) high  
Acq. No. 7153

319. Mask  
MENDE people, Liberia  
Wood with fiber  
22 3/8" (56.9 cm.) high  
Acq. No. 7079

320. Helmet Mask  
MENDE people, Liberia  
Wood with fiber  
15 5/8" (39.3 cm.) high  
Acq. No. 7123

321. Standing Female Figure  
MENDE people, Liberia  
Wood, 16 15/16" (43 cm.) high  
Acq. No. 7136





## THE WESTERN GUINEA COAST

322. Drum  
NGERE people, Ivory Coast  
Wood with pigment  
57 3/16" (145.3 cm.) long  
Acq. No. 7337
323. Textile  
Senegal region  
Cotton, dyed  
35" x 130" (177.8 x 330 cm.)  
Acq. No. 7492
324. Textile  
Senegal region  
Cotton, dyed  
31" x 108" (78.8 x 274.2 cm.)  
Acq. No. 7498
325. Textile  
Senegal region  
Cotton, tied before dyeing  
52" (132 cm.) long  
Acq. No. 7503
326. Textile  
Senegal region  
Cotton, tied before dyeing  
15" x 21" (38.1 x 53.3 cm.)  
Acq. No. 7504
327. Textile  
Senegal region  
Cotton, tied before dyeing  
15" x 32" (38.1 x 81.2 cm.)  
Acq. No. 7505
328. Textile  
Senegal region  
Cotton with wax resist  
35" x 112" (88.8 x 284.4 cm.)  
Acq. No. 7496
329. Textile  
Senegal region  
Cotton, dyed  
35" x 128" (88.8 x 325 cm.)  
Acq. No. 7497







## THE WESTERN GUINEA COAST

330. Textile  
Senegal region  
Cotton, dyed  
31" x 112" (78.8 x 284.4 cm.)  
Acq. No. 7499
331. Textile  
Senegal region  
Cotton, dyed  
30" x 116" (76.1 x 294.5 cm.)  
Acq. No. 7500
332. Textile  
Senegal region  
Cotton, dyed  
31" x 144" (78.8 x 365.6 cm.)  
Acq. No. 7501
333. Textile  
Senegal region  
Cotton, dyed  
35" x 132" (88.8 x 335.2 cm.)  
Acq. No. 7502
334. Textile  
Senegal region  
Cotton, dyed  
31" x 108" (78.8 x 274.2 cm.)  
Acq. No. 7495
335. Textile  
Senegal region  
Cotton with wax resist  
36" x 37 1/2" (91.5 x 95.2 cm.)  
Acq. No. 7490
336. Textile  
Senegal region  
Cotton with wax resist  
35" x 132" (88.9 x 305.8 cm.)  
Acq. No. 7493
337. Textile  
Senegal region  
Cotton, dyed  
35" x 128" (88.9 x 325 cm.)  
Acq. No. 7494
338. Textile  
Senegal region  
Cotton, dyed  
31" x 114" (78.8 x 289.5 cm.)  
Acq. No. 7491
339. Textile Printing Block  
Senegal region  
Wood, 4 3/4" x 4 3/4" (11.8 x 11.8 cm.)  
Acq. No. 7506
340. Bracelet  
Senegal region  
Bronze, 11" (28 cm.) long  
Acq. No. 7445
341. Bowl  
Senegal region  
Wood with pigment  
13 1/8" (33.3 cm.) diameter  
Acq. No. 7131
342. Bracelet  
TOMA people, Guinea  
Brass, 3 3/4" (9.6 cm.) diameter  
Acq. No. 7217
343. Bracelet  
TOMA people, Guinea  
Brass, 3 7/8" (9.6 cm.) diameter  
Acq. No. 7218
344. Brooch  
WOLOF people, Senegal  
Silver with gold wash  
1 1/2" (3.8 cm.) diameter  
Acq. No. 7443
345. Earrings  
WOLOF people, Senegal  
Silver with gold wash  
1" (2.6 cm.) diameter  
Acq. No. 7444
346. Necklace  
WOLOF people, Senegal  
Silver with gold wash  
24" (61 cm.) long  
Acq. No. 7442

## THE WESTERN GUINEA COAST

347. Hair Ornament  
WOLOF people, Senegal  
Silver with gold wash  
1 3/4" (4.5 cm.) diameter  
Acq. No. 7440
348. Hair Ornament  
WOLOF people, Senegal  
Silver with gold wash  
2" (5.1 cm.) diameter  
Acq. No. 7439
349. Hair Ornament  
WOLOF people, Senegal  
Silver with gold wash  
2 1/4" (5.8 cm.) diameter  
Acq. No. 7438
350. Hair Ornament  
WOLOF people, Senegal  
Silver with gold wash  
1 3/4" (4.5 cm.) diameter  
Acq. No. 7441
351. Mask  
Cameroon people  
Wood with pigment  
17 1/4" (43.8 cm.) high  
Acq. No. 7226
352. Spoon  
Cameroon people  
Wood, 11 3/16" (28.4 cm.) long  
Acq. No. 7250
353. Necklace  
Cameroon people  
Bronze with stone and glass beads  
26" (66 cm.) long  
Acq. No. 7317
354. Necklace  
Cameroon people  
Bronze, 30" (76.2 cm.) long  
Acq. No. 7319
355. Necklace  
Cameroon people  
Bronze, 25" (63.5 cm.) long  
Acq. No. 7318
356. Helmet Mask  
EKOI people, Nigeria  
Wood with hide  
15 3/4" (40 cm.) high  
Acq. No. 7083
357. Helmet Mask  
EKOI people, Nigeria  
Wood with hide  
17 5/8" (44.8 cm.) high  
Acq. No. 7077



# NIGERIA, CAMEROON

358. Standing Male Figure  
IBO people, Nigeria  
Wood, 59" (150 cm.) high  
Acq. No. 7119
359. Bracelet  
IBO people, Nigeria  
Ivory, 5 1/16" (12.9 cm.) diameter  
Acq. No. 7203
360. Bracelet  
IBO people, Nigeria  
Ivory, 4" (10.2 cm.) diameter  
Acq. No. 7199
361. Bracelet  
IBO people, Nigeria  
Ivory, 5 1/16" (12.9 cm.) diameter  
Acq. No. 7204
362. Paddle  
ITSEKRI people, Nigeria  
Wood, 62 5/8" (159 cm.) long  
Acq. No. 7428
363. Paddle  
ITSEKRI people, Nigeria  
Wood, 55 15/16" (141.9 cm.) long  
Acq. No. 7427
364. Reliquary Figure  
KOTA people, Gabon  
Wood with copper  
21 1/4" (54 cm.) high  
Acq. No. 7458
365. Headrest for Two  
Nigeria region  
Wood, 21 7/8" (55.6 cm.) long  
Acq. No. 7189
366. Textile  
Nigeria region  
Cotton, dyed  
66" x 80" (167.6 x 203.1 cm.)  
Acq. No. 6960
367. Body Mask  
YORUBA people, Dahomey  
Wood with pigment  
21 3/4" (55.3 cm.) high  
Acq. No. 7459
368. Drum  
YORUBA people, Nigeria  
Wood, hide, and metal  
18 3/4" (47.6 cm.) high  
Acq. No. 7240
369. Mask  
YORUBA people, Nigeria  
Wood, 11 3/4" (30 cm.) high  
Acq. No. 7279
370. Mask  
YORUBA people, Nigeria  
Wood with pigment  
7 15/16" (20 cm.) high  
Acq. No. 7103
371. Twin Cult Figures  
YORUBA people, Nigeria  
Wood, 9 3/4" and 9 7/8"  
(24.8 and 25.1 cm.) high  
Acq. No. 7394
372. Mask  
YORUBA people, Nigeria  
Wood with pigment  
11 15/16" (30.3 cm.) high  
Acq. No. 7342
373. Equestrian Figure  
YORUBA people, Nigeria  
Wood with pigment  
21" (53.3 cm.) high  
Acq. No. 7341
374. Mask  
YORUBA people, Nigeria  
Wood with pigment  
7 15/16" (20 cm.) high  
Acq. No. 7103



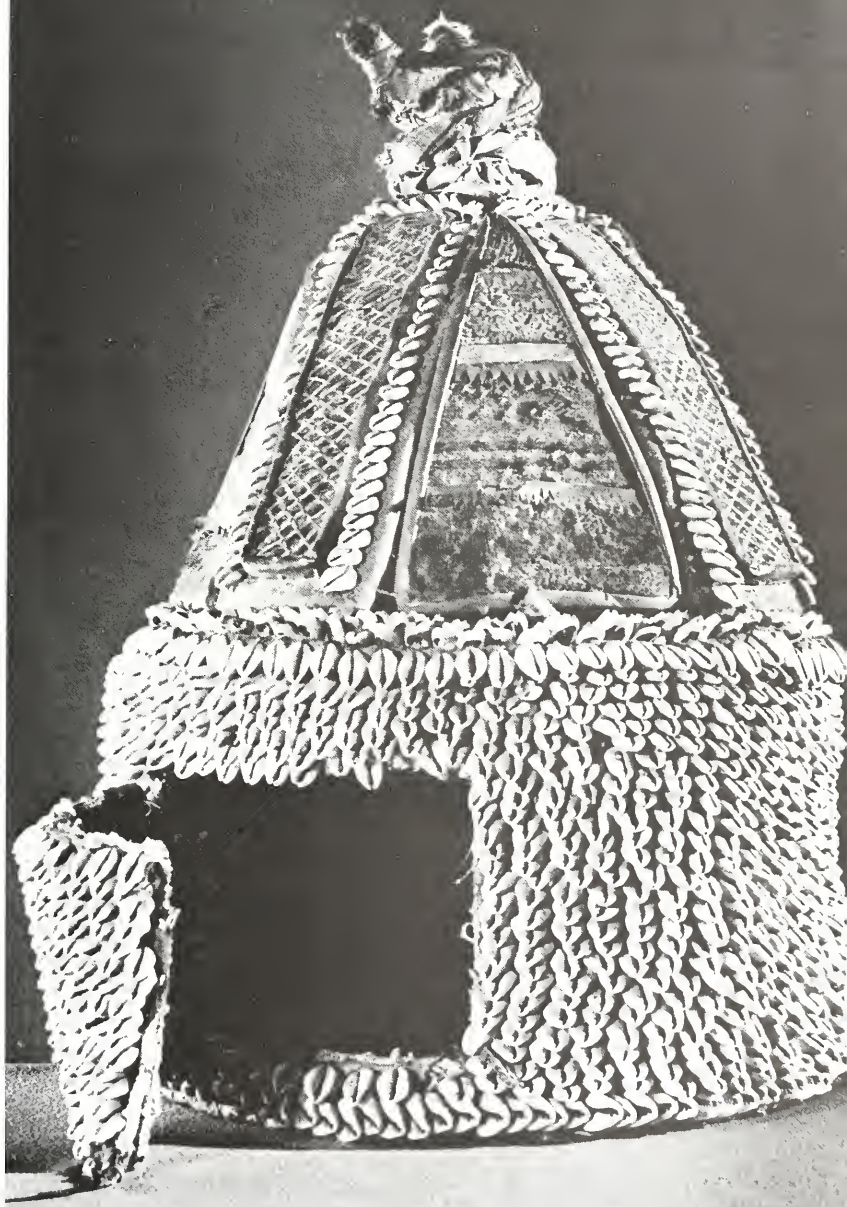


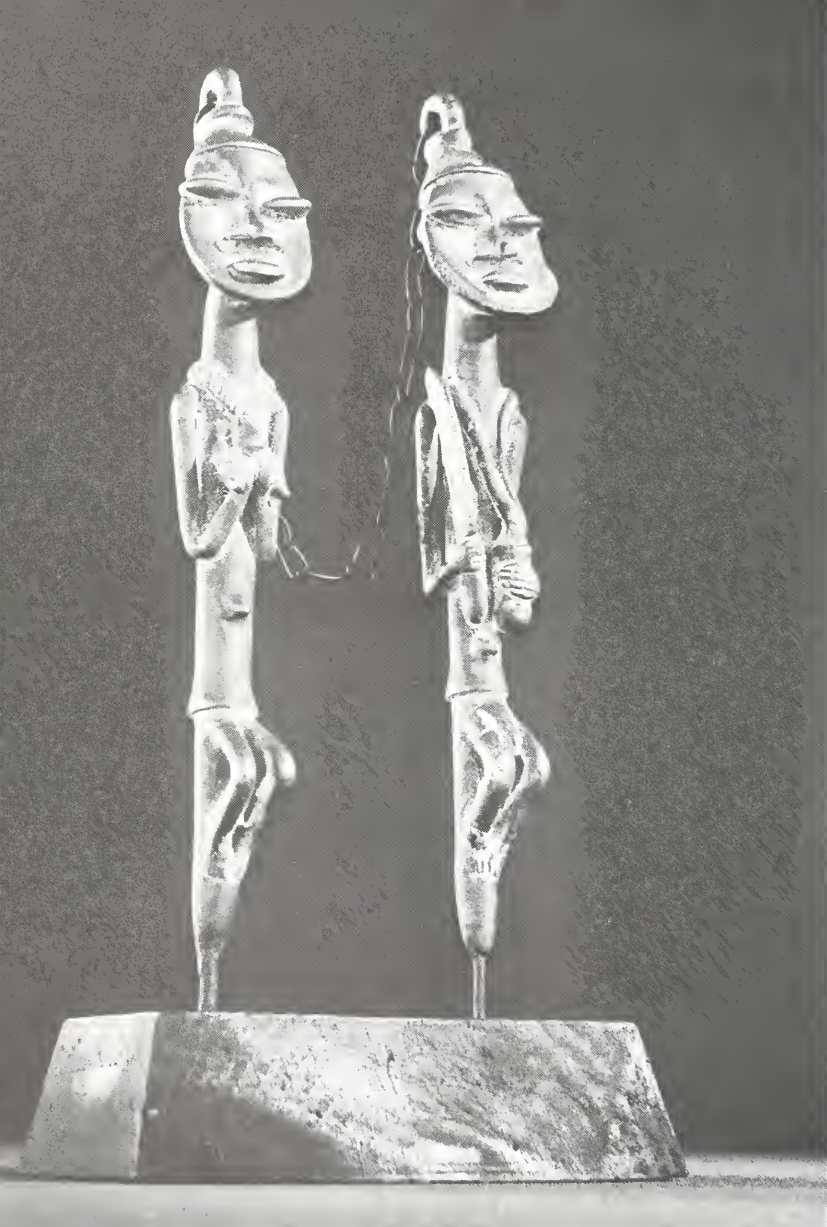


378

# NIGERIA, CAMEROON

375. Mask  
YORUBA people, Nigeria  
11 3/4" (29.9 cm.) high  
Acq. No. 7160
376. Head Cult Container  
YORUBA people, Nigeria  
Shell, cloth, and hide  
20" (50.8 cm.) high  
Acq. No. 7088
377. Head Cult Container  
YORUBA people, Nigeria  
Shell, cloth, and hide  
10 5/16" (26.2 cm.) high  
Acq. No. 7351
378. Helmet Mask  
YORUBA people, Nigeria  
Wood with pigment  
10 3/8" (26.4 cm.) high  
Acq. No. 7122
379. Woven Object  
YORUBA people, Nigeria  
Shell, fiber, and hide  
14 1/2" (36.9 cm.) diameter  
Acq. No. 7117
380. House Post Figure  
YORUBA people, Nigeria  
Wood, 30 3/16" (76.7 cm.) high  
Acq. No. 7265
381. Headpiece  
YORUBA people, Nigeria  
Wood with pigment  
15 3/8" (39 cm.) high  
Acq. No. 7464
392. Twin Cult Figures  
YORUBA people, Nigeria  
Bronze, 8" (20.3 cm.) high  
Acq. No. 7312
383. Twin Cult Figures  
YORUBA people, Nigeria  
Bronze, 8 15/16" (22.7 cm.) high  
Acq. No. 7311





## NIGERIA, CAMEROON

384. Fly Whisk Head  
YORUBA people, Nigeria  
Wood, 12 1/4" (31.1 cm.) high  
Acq. No. 7350
385. Divination Tray  
YORUBA people, Nigeria  
Wood, 15 1/2" (39.3 cm.) diameter  
Acq. No. 7098
386. Divination Tray  
YORUBA people, Nigeria  
Wood  
9 1/2" x 13 9/16" (24.1 x 34.4 cm.)  
Acq. No. 7099
387. Standing Male Figure  
BENA LULUA people, Central Congo  
Wood, 38 3/8" (97.4 cm.) high  
Acq. No. 7288
388. Mask  
KUBA people, Central Congo  
Wood with feathers  
17" (43.2 cm.) high  
Acq. No. 7269
389. Drinking Horn  
KUBA people, Central Congo  
Wood and metal, 11" (28 cm.) long  
Acq. No. 7270
390. Finger Piano  
KUBA people, Central Congo  
Metal and wood  
3 1/16" x 6 1/4" (7.7 x 15.9 cm.)  
Acq. No. 7271
391. Cup  
KUBA people, Central Congo  
Wood, 5 1/16" (12.9 cm.) high  
Acq. No. 6954
392. Box  
KUBA people, Central Congo  
Wood  
6 3/4" x 4" x 2 3/4" (17.2 x 10.2 x 7 cm.)  
Acq. No. 7272





396

393. Standing Male Figure  
 NDENGSE people, Central Congo  
 Wood, 38 1/2" (97.7 cm.) high  
 Acq. No. 7287
394. Loom Heddle Pulley  
 PENDE people, Southwestern Congo  
 Wood, 8 1/16" (20.5 cm.) high  
 Acq. No. 7175
395. Mask  
 PENDE people, Southwestern Congo  
 Wood with pigment  
 9 1/4" (23.5 cm.) high  
 Acq. No. 7268



NIGERIA, CAMEROON

396. Fetish Figure  
SALAMPASU people, Southern Congo  
Wood with fiber  
27'' (68.6 cm.) high  
Acq. No. 7285
397. Mask  
SONGE people, Eastern Central Congo  
Wood with pigment  
24 1/4'' (61.7 cm.) high  
Acq. No. 7335
398. Fetish Figure  
SUKU people, Southwestern Congo  
Wood, 4 3/4'' (12.1 cm.) high  
Acq. No. 7275
399. Fetish Figure  
TEKE people, Southwestern Congo  
Wood with cloth  
15'' (38.1 cm.) high  
Acq. No. 7168
400. Mask  
TSAYE people, Southwestern Congo  
Wood with pigment  
14 1/4'' (36.2 cm.) high  
Acq. No. 7232
401. Mask  
TSHOKWE people, Southern Congo  
Wood with fiber  
8 3/4'' (22.2 cm.) high  
Acq. No. 7267
402. Fetish Figure  
YAKA people, Southwestern Congo  
Wood and cloth  
4 7/16'' (11.3 cm.) high  
Acq. No. 7274
403. Slit Drum  
YAKA people, Southwestern Congo  
Wood, 16 3/4'' (42.5 cm.) high  
Acq. No. 7273



404. Mask  
West Africa region  
Wood, 30 7/8" (78.5 cm.) high  
Acq. No. 7278
405. Mask with headpiece  
West Africa region  
Wood with pigment  
50 1/2" (128.3 cm.) high  
Acq. No. 7277
406. Ceremonial Ax  
West Africa region  
Wood and metal  
21" (53.3 cm.) long  
Acq. No. 7484
407. Carving Ax  
West Africa region  
Metal and wood  
23 5/8" (60 cm.) long  
Acq. No. 7480
408. Carving Ax  
West Africa region  
Metal and wood  
14 5/8" (37.3 cm.) long  
Acq. No. 7482
409. Carving Adz  
West Africa region  
Metal and wood  
14 1/16" (35.7 cm.) long  
Acq. No. 7481
410. Toy Shotgun  
West Africa region  
Wood, 13 7/8" (35.3 cm.) long  
Acq. No. 7256
411. Shield  
West Africa region  
Wood with reed  
30 15/16" (78.5 cm.) high  
Acq. No. 7468
412. Spear  
West Africa region  
Wood, metal, and hide  
38 5/8" (98 cm.) long  
Acq. No. 7471





## WEST AFRICA

413. Spear with Sheat  
West Africa region  
Wood, metal, and hide  
54 9/16" (138.5 cm.) long  
Acq. No. 7469
414. Spear Point  
West Africa region  
Metal, 12 7/8" (32.8 cm.) long  
Acq. No. 7470
415. Spear  
West Africa region  
Metal and wood  
52 5/16" (132.9 cm.) long  
Acq. No. 7473
416. Fishing Spear  
West Africa region  
Metal and bamboo  
64 1/4" (163.1 cm.) long  
Acq. No. 7474
417. Spear Point  
West Africa region  
Metal, 19 5/8" (49.8 cm.) long  
Acq. No. 7472
418. Spear Point  
West Africa region  
Metal, 27 5/8" (70.1 cm.) long  
Acq. No. 7475
419. Spear Point  
West Africa region  
Metal, 20 1/4" (51.2 cm.) long  
Acq. No. 7476
420. Spear Point  
West Africa region  
Metal, wood, and hide  
17 1/8" (43.5 cm.) long  
Acq. No. 7486
421. Spear Point  
West Africa region  
Metal and wood  
20 7/8" (53 cm.) long  
Acq. No. 7488



424. Bracelets (four)  
West Africa region  
Iron, 4 3/4" (12 cm.) diameter  
Acq. No. 7467
425. Bracelet  
West Africa region  
Metal, 3 7/8" (9.9 cm.) diameter  
Acq. No. 7261
426. Armlet  
West Africa region  
Brass, 3 3/16" (8.1 cm.) diameter  
Acq. No. 7262
427. Anklet  
West Africa region  
Metal, 4 1/2" (11.5 cm.) diameter  
Acq. No. 7260

428. Anklet  
West Africa region  
Brass, 3 3/4" (9.5 cm.) diameter  
Acq. No. 7258
429. Anklet  
West Africa region  
Brass, 4 1/2" (11.5 cm.) diameter  
Acq. No. 7259
422. Spear Point  
West Africa region  
Metal, wood, and reed  
18 1/2" (47 cm.) long  
Acq. No. 7487
423. Musical Instrument  
West Africa region  
Wood, 19 3/4" (50.2 cm.) long  
Acq. No. 7479







265



303

## WEST AFRICA

430. Textile  
West Africa region  
Cotton, hand printed and embroidered  
85" x 136" (215.8 x 345.3 cm.)  
Acq. No. 6919
431. Textile  
West Africa region  
Cotton, hand printed and embroidered  
84" x 136" (213.3 x 345.3 cm.)  
Acq. No. 6973
432. Bowl  
West Africa region  
Wood with pigment  
13 1/8" (33.3 cm.) diameter  
Acq. No. 7131
433. Necklace  
West Africa region  
Cast metal  
18 3/8" (46.7 cm.) high  
Acq. No. 7208
434. Mask  
West Africa region  
Wood with pigment  
14 3/16" (36.1 cm.) high  
Acq. No. 7148











**The University Museums  
Illinois State University  
Normal-Bloomington 61761**

Ewing Museum of Nations  
Eyestone School Museum  
Funk Gem and Mineral Museum  
Hudelson Museum of Agriculture  
Stevenson Memorial Room  
University Historical Museum

## Date Due

FEB 1 0 1982	MAR 1 0 1982	
APR 2 0 1982	MAR 3 0 1982	
NOV 4 1982	APR 2 0 1982	
DEC 7 1982	NOV 4 - 1982	
	DEC 9 - 1982	
APR 1 1 1983	APR 1 1 1983	
SEP 1 7 1983		
OCT 3 0 1983	OCT 1 6 1983	
DEC 4 1983	NOV 2 1 1983	
APR 2 7 1984	MAY 1 0 1984	
FEB 0 2 1987	JAN 1 2 1987	
APR 1 4 1987	APR 0 3 1987	
APR 2 7 1987	APR 0 2 1987	

Funds for producing this catalog were provided jointly by Illinois State University and the Illinois State University Foundation.

UNIVERSITY OF FLORIDA



3 1262 04233 6957

ARCH &  
FINE ARTS  
LIBRARY



The Ewing Museum of Nations  
Illinois State University Foundation